

# S STONE SENSIES

BY STONE CONSULTING  
Producer    Creator    Transformer



ALMORA - MOROCCO



Dear customer.

**Stone Senses by Stone Consulting** offers exclusive and high-quality natural stone and derivatives.

**With 25 years of experience** in design, creation and manufacturing, we have built high-end expertise and a network of professionals in the natural stone industry. We turn your ideas into solutions.

With our participation in our **own quarries** and factory units in Morocco, we have direct control over the quality and delivery of natural stone. We deliver customised solutions, including packaging, pallets, labels, etc.

Our professional staff contribute to constant quality and service during the production process.

Stone Senses by Stone Consulting also provides the necessary documentation, such as CE certification, DOP (Declaration of Performance). All orders and deliveries are traceable via track and trace. We continue to communicate.

Through our **membership of BNSA** (Benelux Natural Stone Association), we are involved in the industry and adhere to strict standards and guidelines. We are also an active member of Trustone and closely follow its Code Of Conduct. Ethical practices and quality are paramount.

**Stone Senses by Stone Consulting** stands for mastery, innovation, experience, control over the production chain and compliance with standards.

In this catalogue, we proudly present to you a large selection of aesthetic and quality natural stone for your next project.

Kind regards,

Chris Van Kerschaver  
Salesmanager  
Stone Consulting NV – Stone Senses.



Beste klant.

**Stone Senses by Stone Consulting** biedt exclusieve en hoogwaardige natuursteen en afgeleiden.

**Met 25 jaar ervaring** in ontwerp, creatie en fabricage hebben we in de natuursteen industrie een high-end expertise en een netwerk van professionals opgebouwd. Wij zetten uw ideeën om in oplossingen.

Met onze participatie in **eigen groeves** en fabrieksunits in Marokko hebben we directe controle over de kwaliteit en levering van natuursteen. We leveren maatwerk, inclusief verpakking, pallets, labels, etc.

Ons professioneel personeel draagt bij aan een constante kwaliteit en service tijdens het productieproces.

Stone Senses by Stone Consulting verzorgt ook de nodige **documentatie**, zoals CE-certificering, DOP (Declaration of Performance). Alle bestellingen en leveringen zijn traceerbaar via track and trace. We blijven communiceren.

Door ons **lidmaatschap van BNSA** (Benelux Natural Stone Association) zijn we betrokken bij de industrie en houden we ons aan strenge normen en richtlijnen. We zijn ook actief lid van **Trustone** en volgen nauwgezet de Code Of Conduct op. Ethische praktijken en kwaliteit staan voorop.

**Stone Senses by Stone Consulting** staat voor meesterschap, innovatie, ervaring, controle over de productieketen en naleving van normen.

In deze catalogo presenteren wij u met trots een grote selectie esthetische en kwalitatieve natuursteen voor uw volgende project.

Vriendelijke groeten,

Chris Van Kerschaver  
Salesmanager  
Stone Consulting NV – Stone Senses.



# INDEX



## ALMORA SINGLE STONE

T.A.B. - Limestone - Sahara - Louvre  
 T.A.B. - Limestone - Different finishings  
 T.A.B. - Limestone - Cathedrale  
 T.A.B. - Limestone - Manoir  
 T.A.B. - Limestone - Century - Select  
 T.A.B. - Limestone - Driveway  
 T.A.B. - Limestone - Natural split  
 T.A.B. - Limestone - St. Julien - Calima S  
 T.A.B. - Limestone - Vibrated - Cobbles  
 T.A.B. - Limestone - Century S  
 T.A.G. - Limestone - Century  
 T.A.G. - Limestone - Different finishings  
 T.A.G. - Limestone - Loft  
 T.A.G. - Limestone - Chisseled  
 T.A.G. - Limestone - Castle stone  
 T.A.G. - Limestone - Tumbled - Cobbles  
 T.A.G. - Limestone - Century  
 T.J.H. - Limestone - Different finishings  
 T.J.H. - Limestone - Sahara  
 Z.O.B. - Limestone - Berber (Var)  
 Z.O.B. - Limestone - Different finishings  
 Z.O.B. - Limestone - Calima  
 Z.O.B. - Limestone - Century H  
 Z.O.B. - Limestone - Wall stone - Erosion  
 Z.O.B. - Limestone - Cathedrale  
 Z.O.B. - Limestone - Sink - Leather  
 Z.O.B. - Limestone - Stair - Leather  
 Z.O.B. - Limestone - Century H  
 K.A.H. - Limestone - Different finishings

### Test results

Z.A.G. - Limestone - Own quarry  
 Z.A.G. - Limestone - Century  
 Z.A.G. - Limestone - Different finishings  
 Z.A.G. - Limestone - Old Heritage  
 Z.A.G. - Limestone - Antiquaire  
 Z.A.G. - Limestone - Manoir  
 S.A.R - Travertin - Different finishings  
 S.A.R - Travertin - Cathedrale  
 K.N.F. - Limestone - Different finishings

## ALMORA BLEND STONE

Fez  
 Fez - Outside (after 10 years)  
 St. Emillion  
 Vieux Patrimoine - Château St-Julien  
 Opus pattern - Vieux Patrimoine  
 Vieux Patrimoine - Old Cottage  
 Old heritage beige  
 Posedano Morocco  
 Posedano  
 Yanis - Zefrou - Paviers  
 Opus pattern 406  
 Amazone Beige - Century H  
 Volubelis - Kahla • Meknes  
 Amazone Beige - Grey  
 Amazone Beige - Antiquaire  
 Poolborders  
 Stairs  
 Pool Borders - Technical sheets  
 Pool Borders - Drawing  
 Technical sheet - Roman bath  
 Technical sheet - Sinks  
 Gate  
 Block stairs - Borders - Wall caps  
 Palissades  
 Sinks - Shower plates  
 Fountains  
 Blocks • Slabs  
 Factory - Zefrou - Morocco  
 Packing  
 Company info



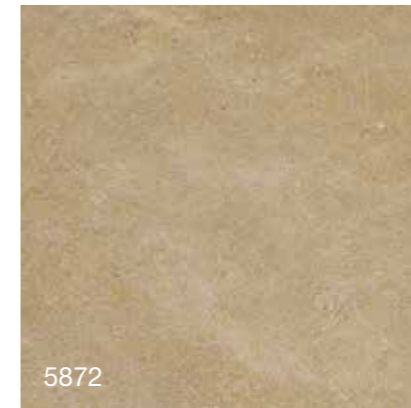
# ALMORA - SINGLE STONE



# T.A.B. - Limestone



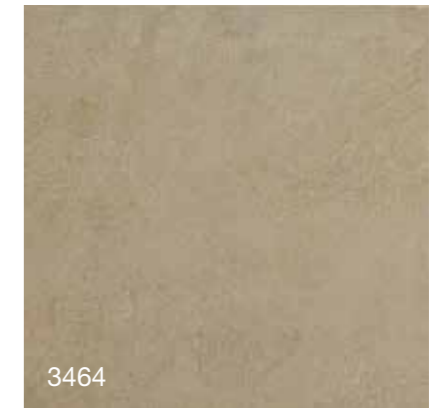
T.A.B. - Sahara - Louvre



Sahara



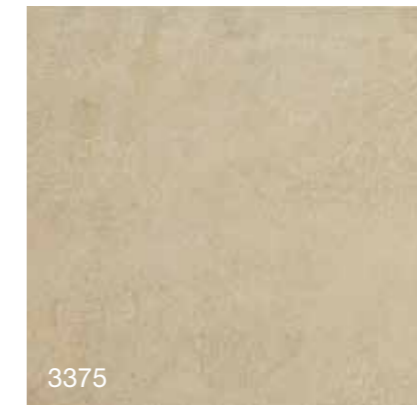
Erosion



Loft



Manoir



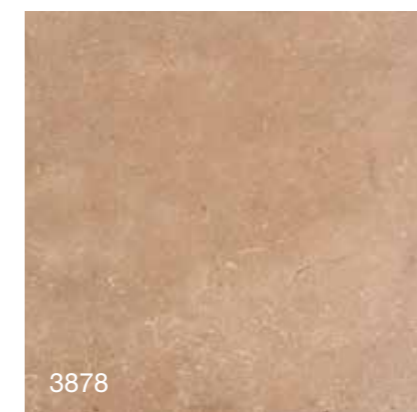
Calima - B



Leather



Cathedrale

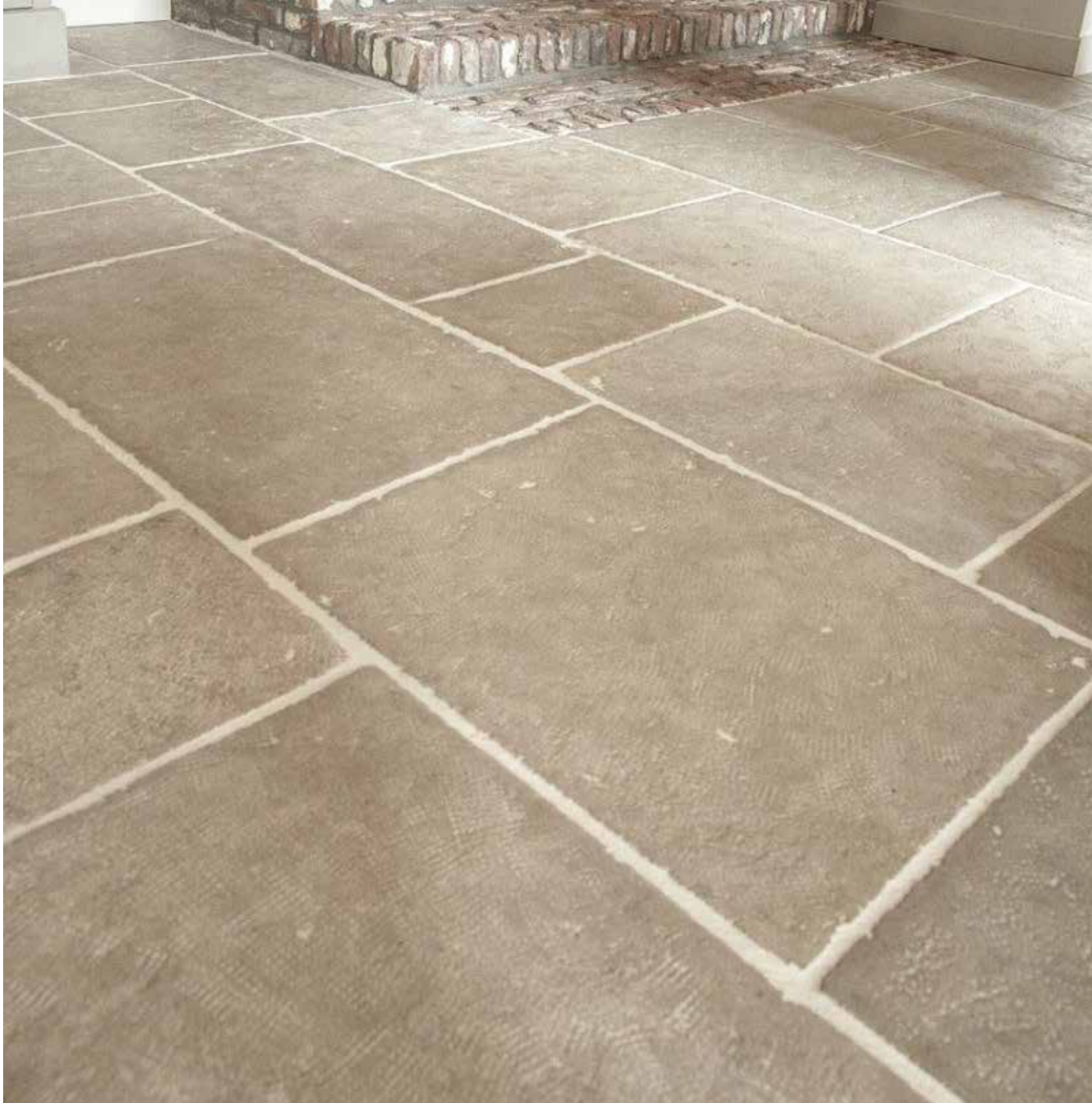


Century H



Natural Split

# T.A.B. - Limestone



T.A.B. - Cathedrale



T.A.B. - Manoir

# T.A.B. - Limestone



T.A.B. - Century - Select



T.A.B. - Century - Select

# T.A.B. - Limestone



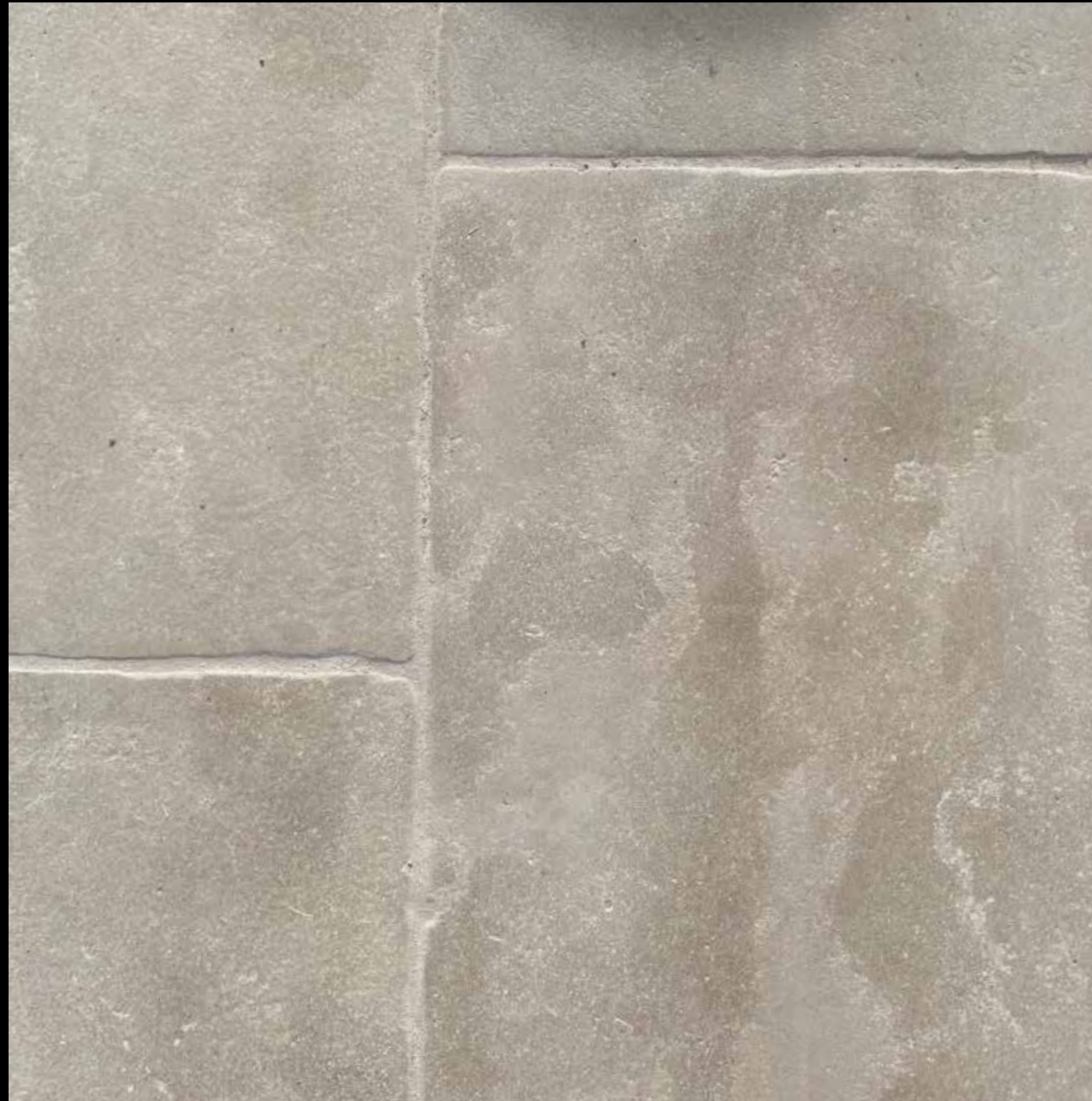
T.A.B. - Driveway - Old century driveway with uneven surface



T.A.B. - Natural split



# T.A.B. - Limestone



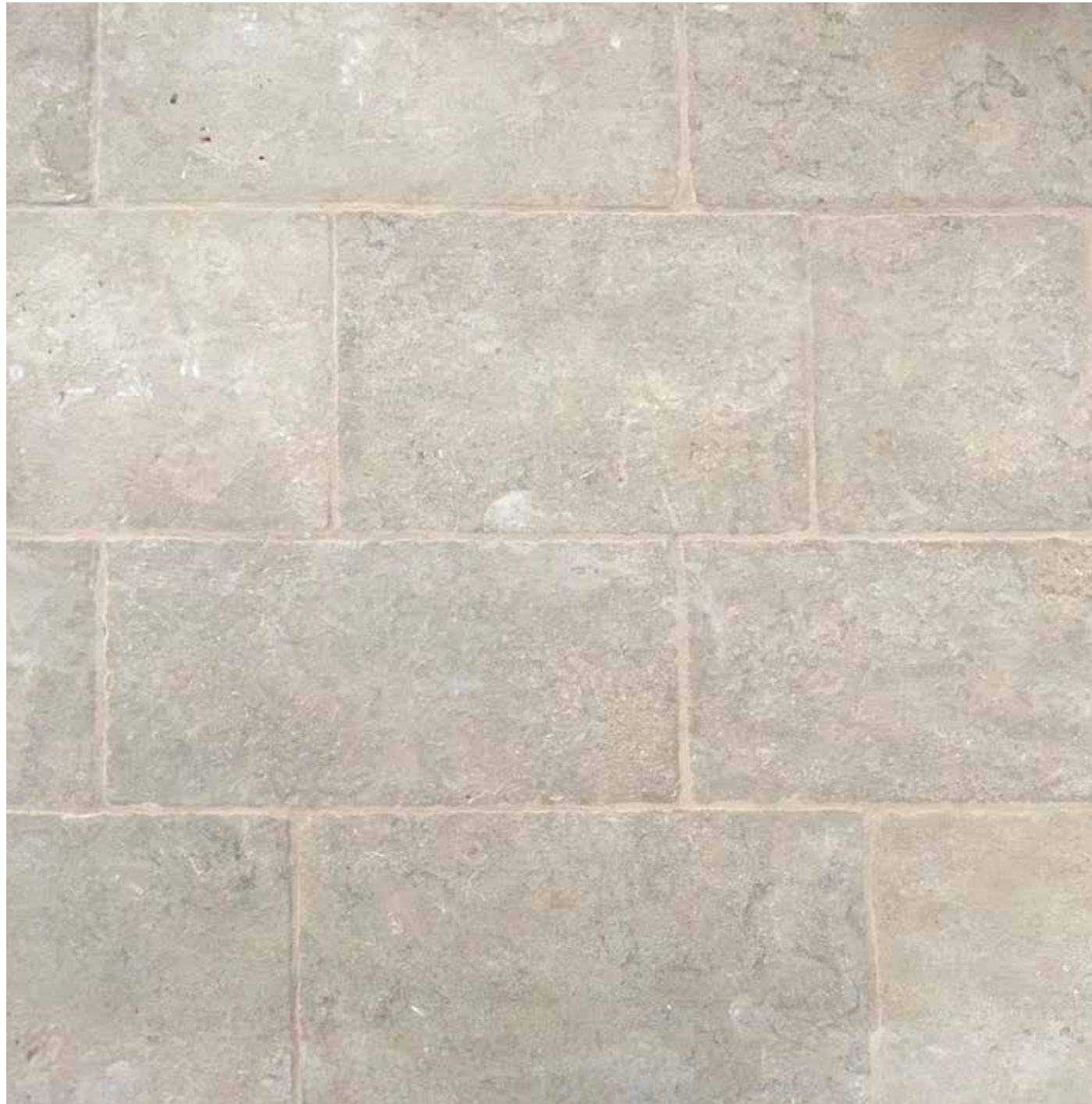
T.A.B. -St Julien - Calima S

# T.A.B. - Limestone



T.A.B. - Vibrated - Cobbles - 150 x 150 x 20 mm

# T.A.Br. - Limestone



T.A.Br. - Century S

# T.A.Br. - Limestone



T.A.Br. - Century S

# T.A.G. - Limestone



T.A.G. - Century

# T.A.G. - Limestone



Sahara



Erosion



Loft



Manoir - Bar



Calima - B



Leather



Cathedrale



Century

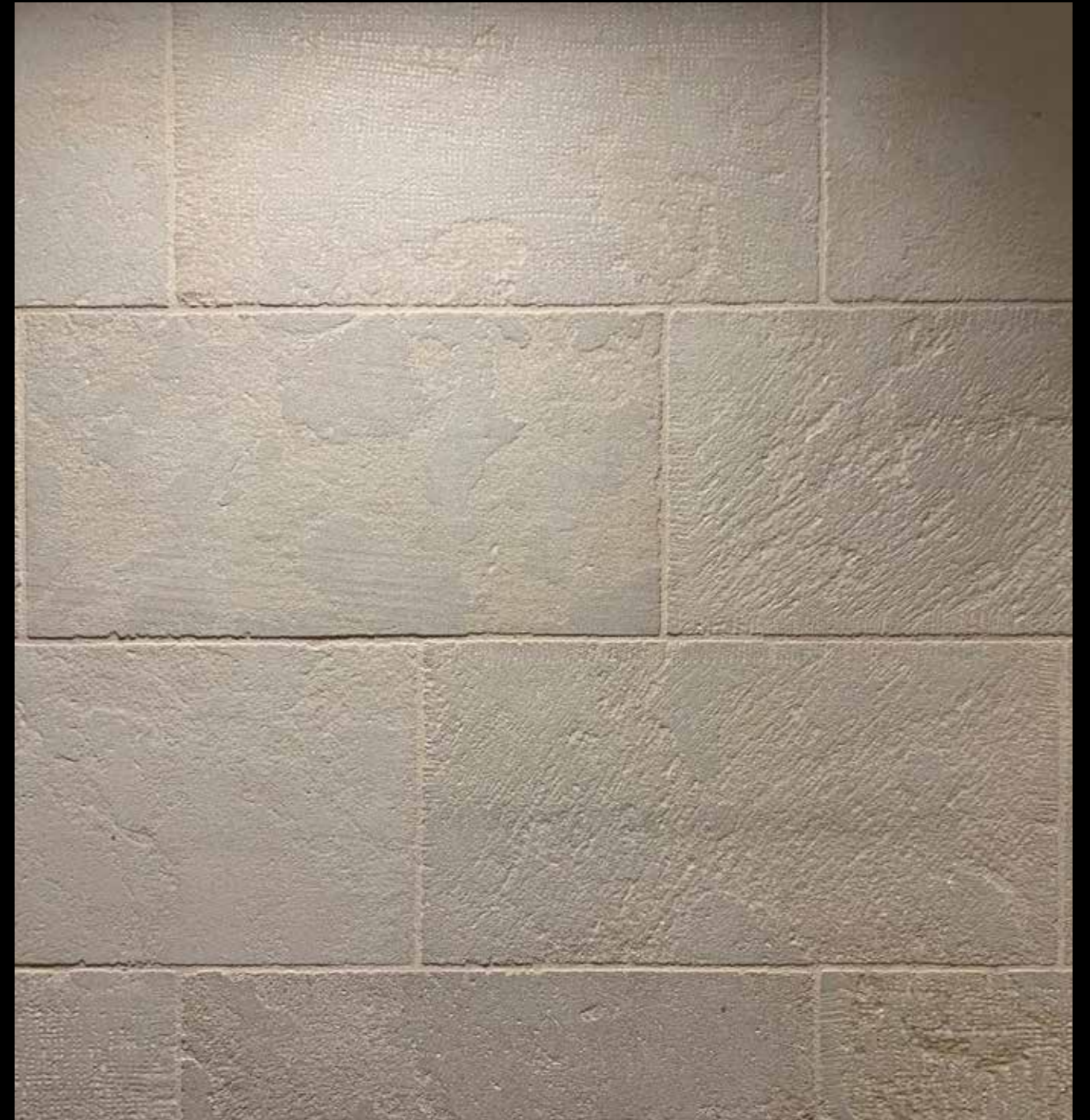


Natural Split

# T.A.G. - Limestone



T.A.G. - Loft



T.A.G. - Chiseled

# T.A.G. - Limestone



T.A.G. - Castle stone

# T.A.G. - Limestone



T.A.G. - Century - 150 x Fl x 20 mm

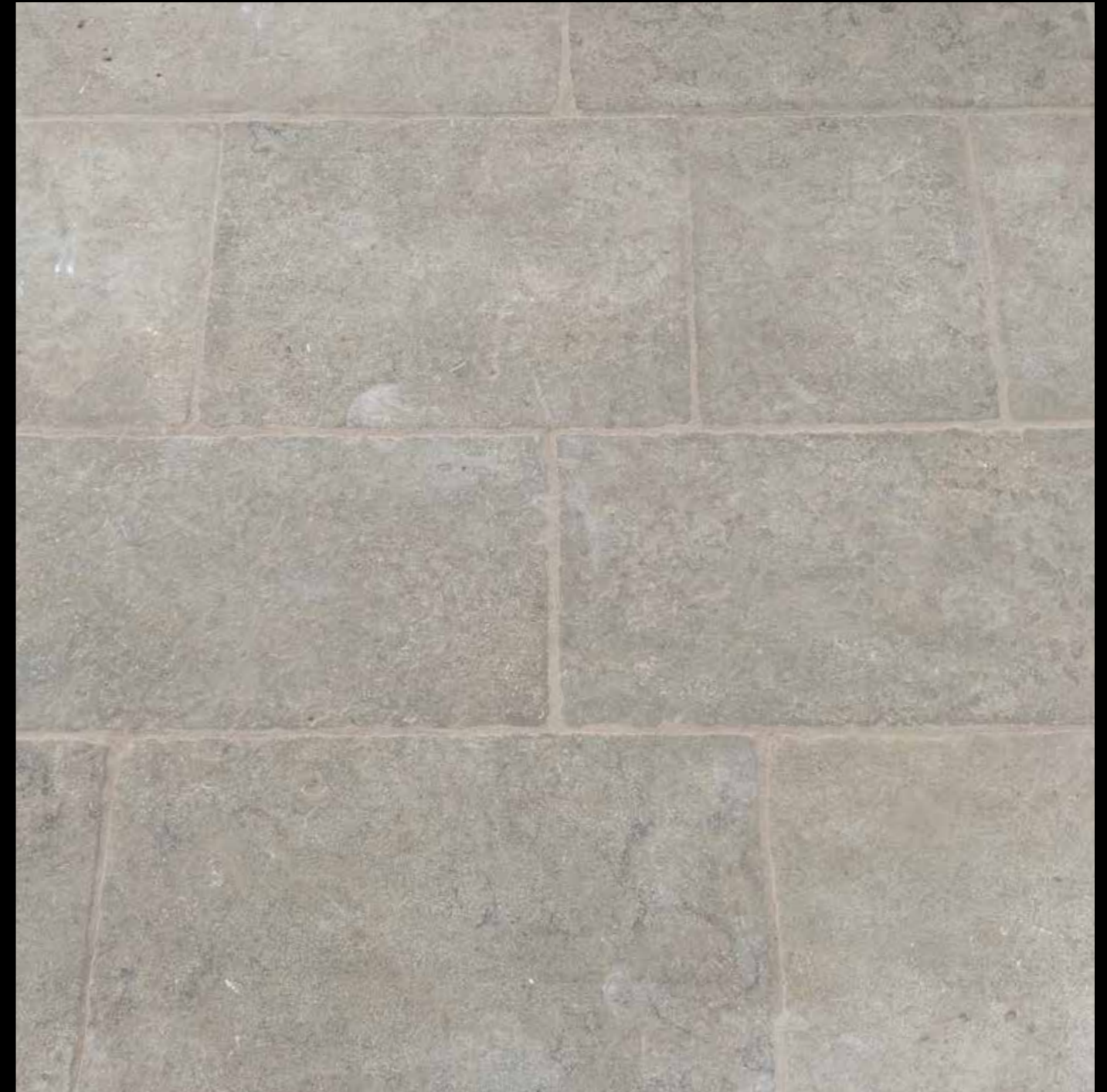
# T.A.G. - Limestone



5531

T.A.G. - Tumbled - Cobbles - 150 x Fl x 20 mm

# T.A.Br. - Limestone

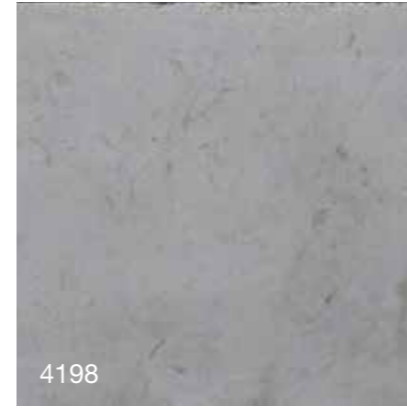


T.A.Br. - Manoir

# T.J.H. - Limestone

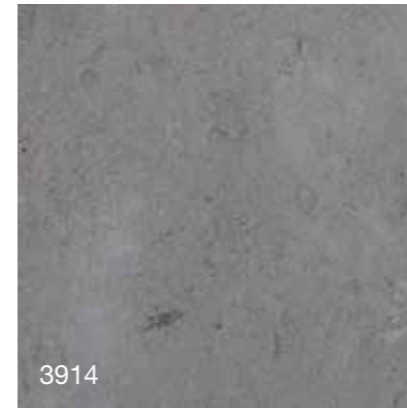


T.J.H. - Sahara



4198

Sahara



3914

Erosion



3463

Manoir

# T.J.H. - Limestone



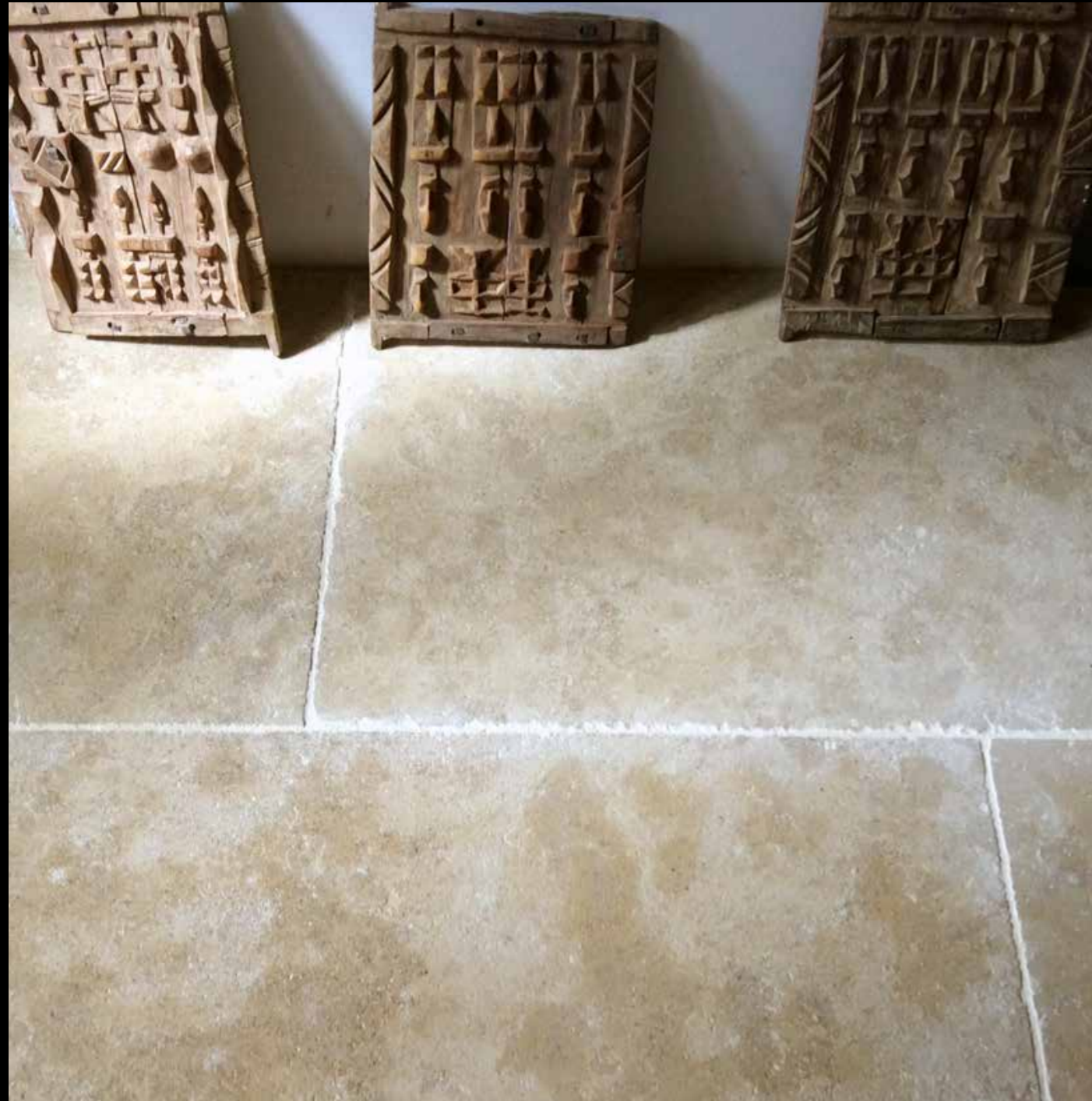
T.J.H. - Sahara



T.J.H. - Sahara



# Z.O.B. - Limestone



Z.O.B. - Berber (Var)



Sahara



Erosion



Loft



Manoir



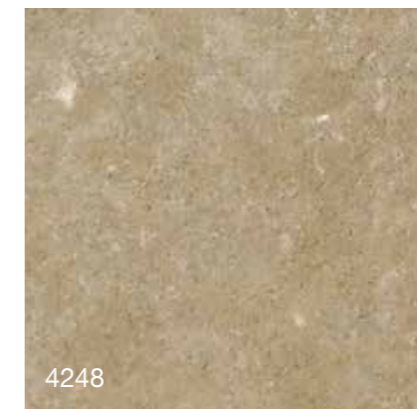
Calima - B



Leather



Cathedrale



Century

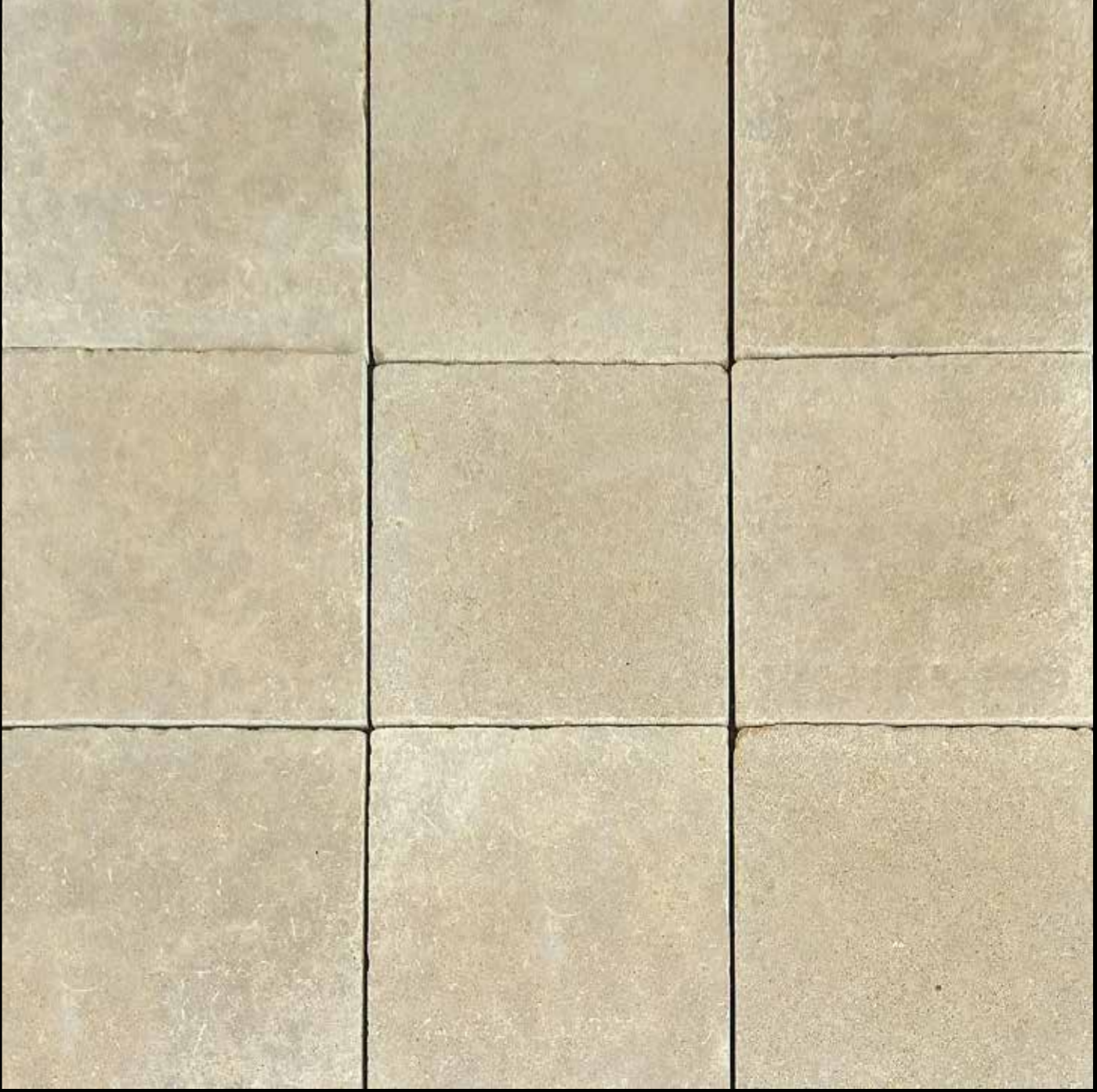


Berber

Z.O.B. - Limestone

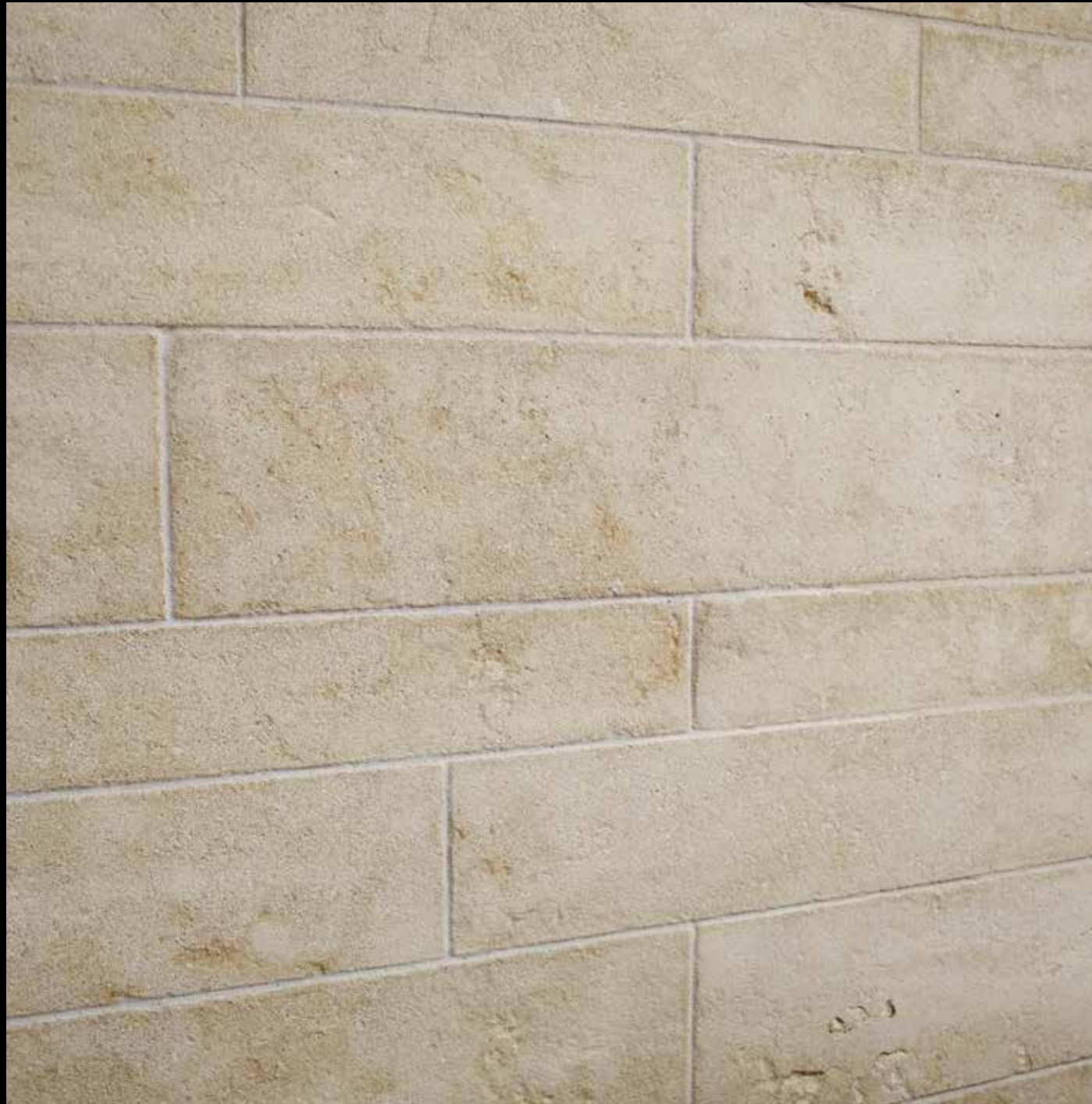


Z.O.B. - Calima



Z.O.B. - Century H

# Z.O.B. - Limestone



Z.O.B. - Wall stone - Erosion



Z.O.B. - Cathedrale

# Z.O.B. - Limestone



Z.O.B. - Sink - Leather



Z.O.B. - Stair - Leather

Z.O.B. - Limestone

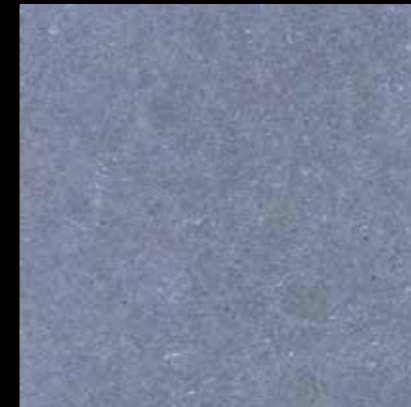


Z.O.B. - Century H

# K.A.H. - Limestone



Honed



Brushed



Century H



Sirocco B



MOD 66a Rev. 03



AZIENDA CON SISTEMA DI GESTIONE QUALITÀ CERTIFICATO DA UNIV. G. # 1003 8001 \*

## PETROGRAPHIC EXAMINATION - NATURAL STONE TEST METHODS Standard UNI EN 12407

This Test Report is issued in English on request of the Client. The original Italian version exists.

DATE OF THE TEST REPORT	04/07/2017	N° OF TEST REPORT	16897-237-279	
CLIENT	PROMOMARBRE	SAMPLE	1	UNI EN 1341, 1342, 1343, 1469, 12057, 12058
DATE OF SAMPLING	07/04/2017	SOURCE OF SAMPLING	From pallets	
DATE OF DELIVERY	27/04/2017	ADDRESS	Zone Industrielle AIN ATIQ, Marocco	
Name of the Supplier	Client			
BEGINNING OF THE TEST	12/05/2017	END OF THE TEST	01/06/2017	CONDIZIONI METEO
				Sereno
Petrographic Name of the stone	Litharenite	Commercial Name of the stone	Kahla Grey	
Country and region of extraction	Morocco	Surface finish of the sample	Polished	

### MACROSCOPIC DESCRIPTION

	It is a sedimentary rock massif and compact with abundant bioclasts. It has gray colour with bioclasts whose colour can change from white and black. Its colour changes from Light olive gray 5Y 6/1 and Pale yellowish brown 10YR 6/2 with spots of Olive gray 5Y 4/1 and of Med dark gray 4N according to the Rock Color Chart of the Geological Society of America. The rock is medium coarse grained and its main constituents are abundant bioclasts littler than 1 cm heterogeneously oriented. Some closed stylolitic joints and micro-pores heterogeneously widespread are present as well. The material looks not weathered, it reacts intensely when in contact with hydrochloric acid and can be scratched with a metallic tip.
--	--

### MICROSCOPIC DESCRIPTION (thin section)

	It is a sedimentary rock formed in transitional high energy area, between the zone of carbonate sediments and siliciclastic ones. It has heterogeneous texture with compositional patches, massive. Its texture is mixed changing from organic-sedimentary, polytic and clastic. The constituents of the rock are usually littler than 6 mm, only few clasts can be up to sub centimetric. The support is granular. Allochemical components are of various types: bioclasts such as: fragments of bivalves, brachiopods, echinoderms; algae and foraminifera maybe also agglutinating; peloids, ooids, also with terrigenous nucleus; aggregate grains; intraclasts.
	Terrigenous components are litter than 0.5 mm and are composed of quartz, flint fragments, rare feldspars, terrigenous lithoclasts such as marble fragments from sub angular to sub rounded, sometimes with dolomitic carbonate; micritic lithoclasts with organogenic tritume, biosparite and oosparite fragments, compact sandstones with quartz clasts littler than 0,1 mm. The ortochemical constituent is sparite while no micrite can be seen.
DISCONTINUITY:	few intergranular and intragranular pores are scattered into the sections and closed stylolitic joints are present too.
ALTERATION:	not one
PETROGRAPHIC DEFINITION (EN12407 e EN12670):	LITHARENITE (Folk, 1974) LITHIC ARENITE ( Pettijohn at al., 1972) (Sedimentary Rocks Classification Charts)
COMMERCIAL NAME:	KAHLA GREY

Page 1 of 2

CET-SERVIZI RICERCA E SVILUPPO S.R.L.  
Sede legale: Loc.Secchiello 7, 38060 Isera (TN) - Cod.Fiscale e P.Iva: IT 01880560220  
Tel: 0464-486344 Fax: 0464-458078 E-mail: info@cet-servizi.it PEC: cetservizi@pec.cet-servizi.it

MOD 64 Rev. 05



AZIENDA CON SISTEMA DI GESTIONE QUALITÀ CERTIFICATO DA UNIV. G. # 1003 8001 \*

## DETERMINATION OF APPARENT DENSITY NATURAL STONE TEST METHODS Standard UNI EN 1936

This Test Report is issued in English on request of the Client. The original Italian version exists.

DATE OF THE TEST REPORT	04/07/2017	N° OF TEST REPORT	16897-237-277	
CLIENT	PROMOMARBRE	SAMPLE	1	UNI EN 1469 - 12057 - 12058
DATE OF SAMPLING	07/04/2017	SOURCE OF SAMPLING	From pallets	
DATE OF DELIVERY	27/04/2017	ADDRESS	Zone Industrielle AIN ATIQ, Marocco	
Name of the Supplier	Client			
BEGINNING OF THE TEST	22/05/2017	END OF THE TEST	24/05/2017	WEATHER CONDITIONS
				Clear

Petrographic Name of the stone	Litharenite
Country and region of extraction	Morocco
Commercial Name of the stone	Kahla Grey
Surface finish of the sample	Sawn surface

Form and size of the specimens: prism (180x60x30) mm

Apparent volume: 324 ml (> 60 ml)

Ratio surface / volume: 0,11 mm<sup>-1</sup> (between 0,08 mm<sup>-1</sup> and 0,20 mm<sup>-1</sup>)

Water temperature in °C: 21,2 Water density (kg/m<sup>3</sup>): ρ<sub>th</sub> 998

Specimen n°	Mass of the dried specimen (g) m <sub>ai</sub>	Mass of the saturated specimen (g) m <sub>si</sub>	Mass of the specimen immersed in water (g) m <sub>hi</sub>	Apparent density (kg/m <sup>3</sup> ) ρ <sub>bi</sub>	Open porosity (%) ρ <sub>oi</sub>
1	878,97	884,22	554,96	2,664	1,59
2	885,80	892,56	558,91	2,650	2,03
3	885,35	890,72	559,16	2,665	1,62
4	875,98	883,64	552,42	2,639	2,31
5	879,92	885,59	555,61	2,661	1,72
6	876,21	884,25	553,06	2,640	2,43

$$\rho_b = \text{Average} \sum \rho_{bi} = \text{Average} \sum [m_{ai}/(m_{si}-m_{hi})] \times \rho_{th} = 2,653 \text{ kg/m}^3$$

$$\rho_o = \text{Average} \sum \rho_{oi} = \text{Average} \sum [(m_{si}-m_{ai})/(m_{si}-m_{hi})] \times 100 = 1,95 \%$$

where ρ<sub>b</sub> is the average apparent density, in kilograms for cubic metre.  
ρ<sub>o</sub> is the open porosity expressed by the ratio of the volume of open pores and the apparent volume in %.

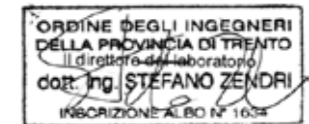
This Test Report refers only to the tested samples.

This Test Report may not be reproduced except in full, without the prior written permission of the CET SERVIZI laboratory.

Note:

Detail: Sampled by the client.

Il tecnico  
Manfredi Marco



CET-SERVIZI RICERCA E SVILUPPO S.R.L.  
Sede legale: Loc.Secchiello 7, 38060 Isera (TN) - Cod.Fiscale e P.Iva: IT 01880560220  
Tel: 0464-486344 Fax: 0464-458078 E-mail: info@cet-servizi.it PEC: cetservizi@pec.cet-servizi.it



Quarry



Quarry

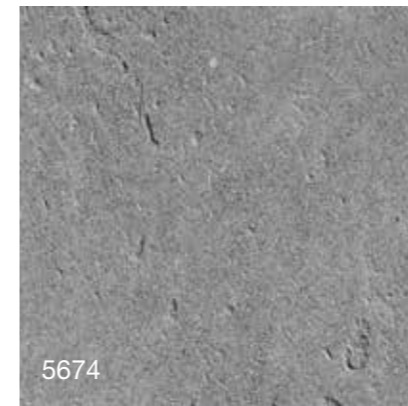


# Z.A.G. - Limestone



Z.A.G. - Century

# Z.A.G. - Limestone



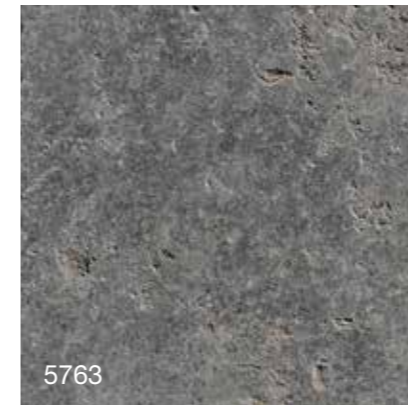
Antiquaire



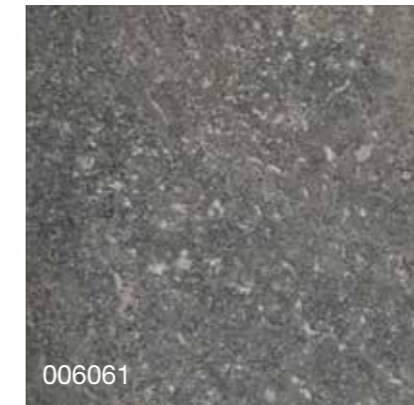
Loft



Sirocco FWB



Century



Leather



Sirocco SWB



Manoir

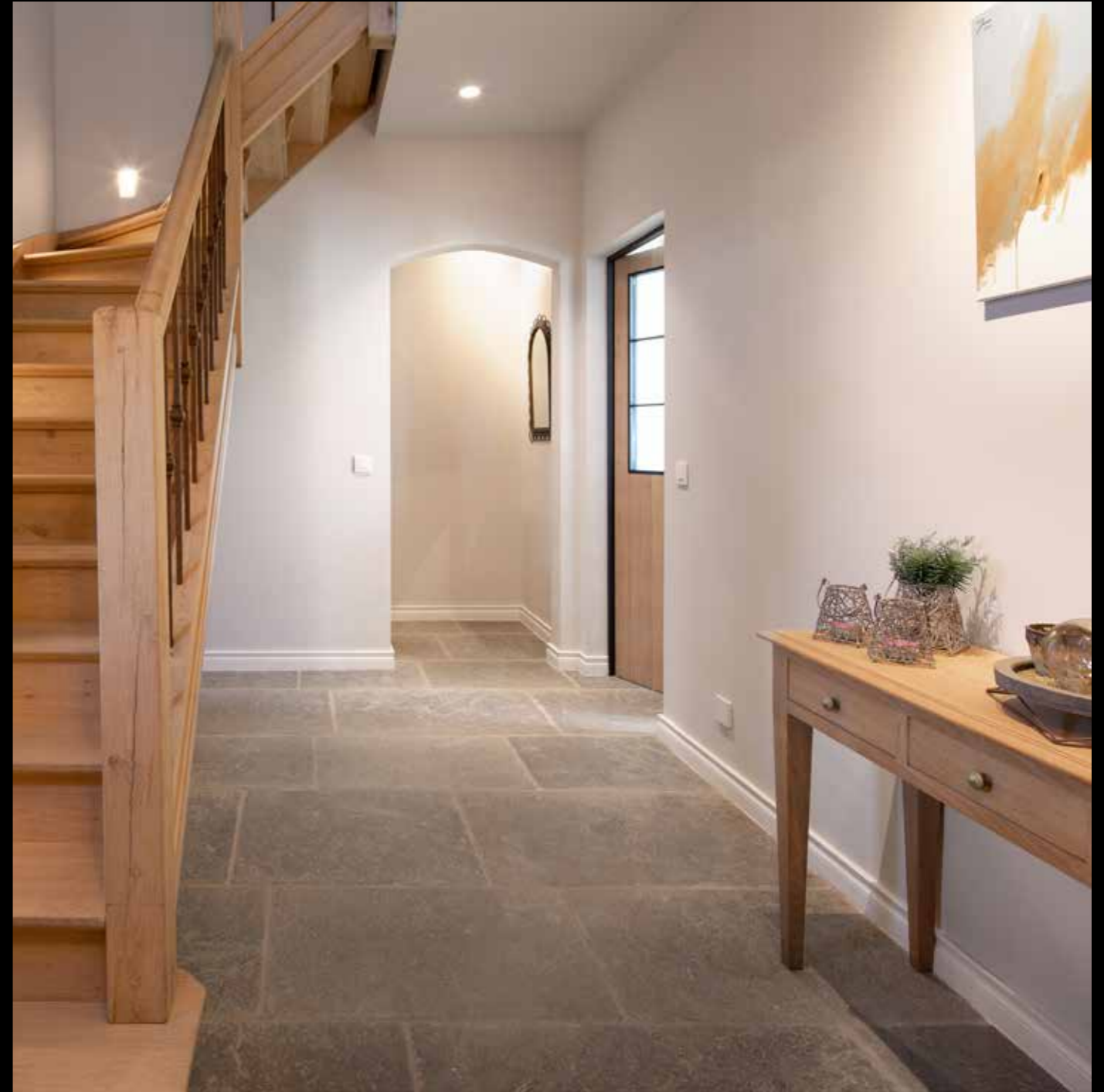


Old Heritage

Z.A.G. - Limestone



Z.A.G. - Old heritage



Z.A.G. - Old heritage

Z.A.G. - Limestone

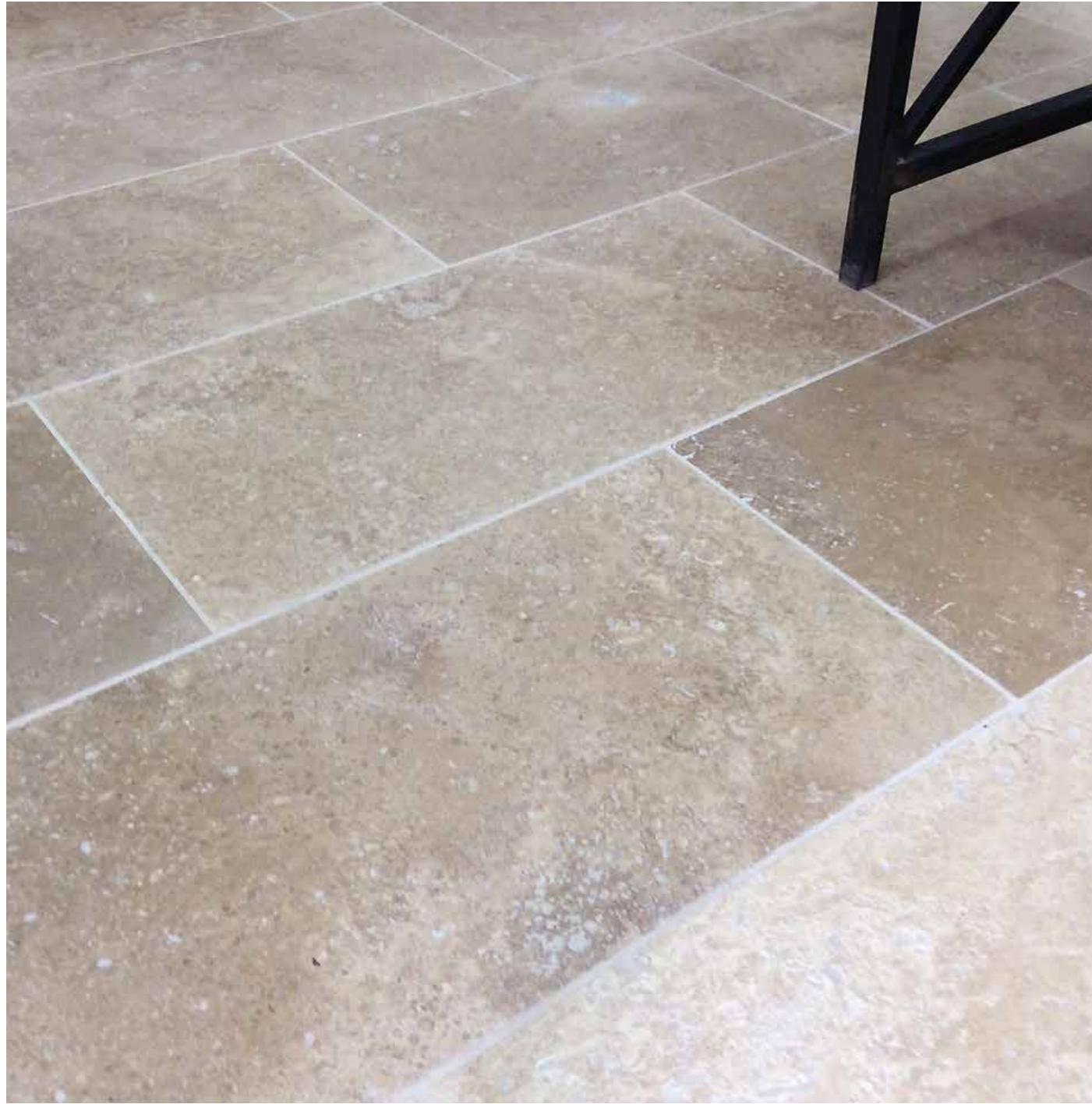


Z.A.G. - Antiquaire



Z.A.G. - Manoir

# S.A.R - Travertin

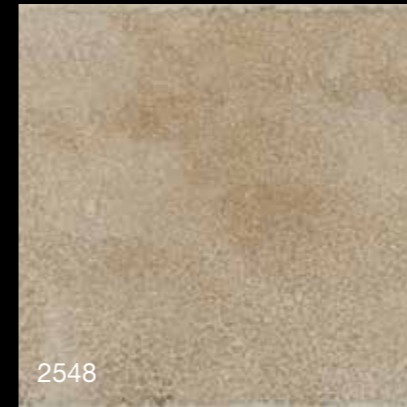


S.A.R. - Leather



3877

Leather



2548

Bushhammered



Cathedrale

# S.A.R - Travertin



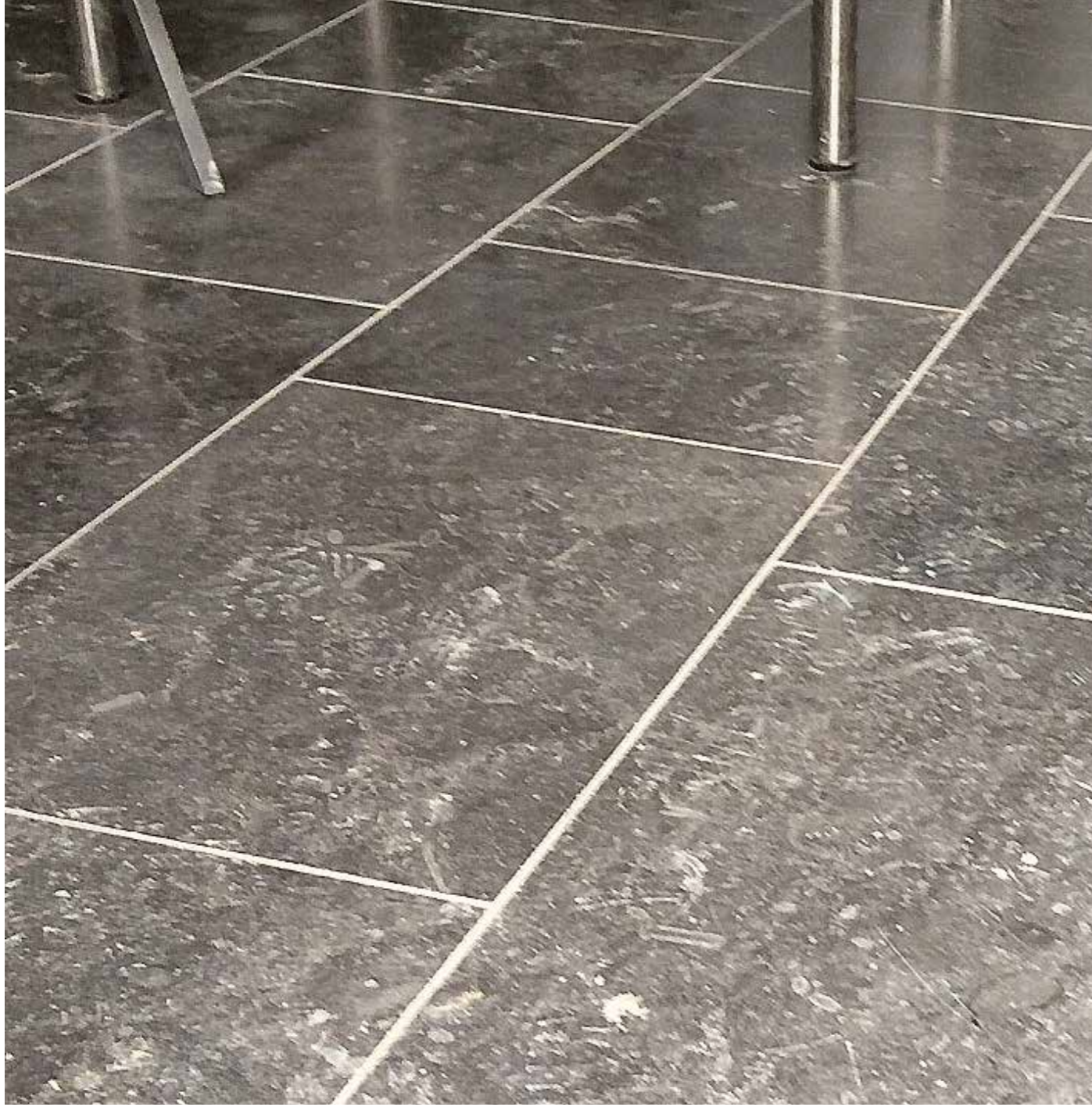
S.A.R. - Cathedrale

# S.A.R - Travertin



S.A.R. - Cathedrale

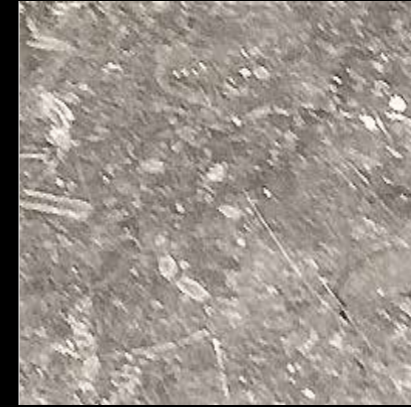
# K.N.F. - Limestone



K.N.F. - Leather



Antiquaire



Leather



Cathedrale

# ALMORA BLEND STONE



# Fez



T.A.B. + T.A.Br + Z.O.B.



T.A.B. + T.A.Br





T.A.B. + T.A.Br + T.A.G. + Z.O.B.



T.A.B. + T.A.Br + T.A.G.

# Fez



T.A.B. + T.A.Br





# Fez - Outside (after 10 years)



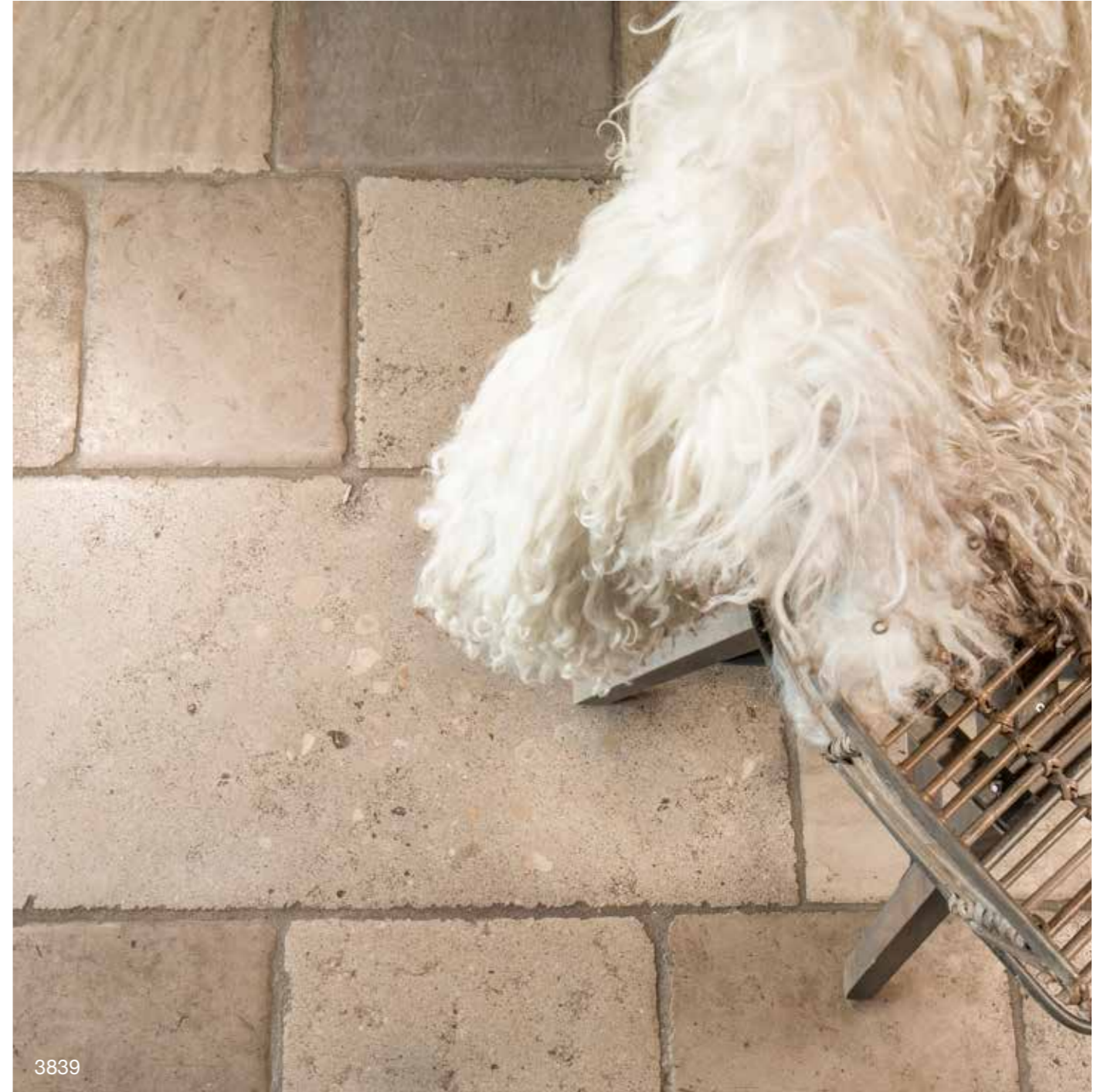
T.A.B. + T.A.Br





3839

T.A.B. + T.A.Br.



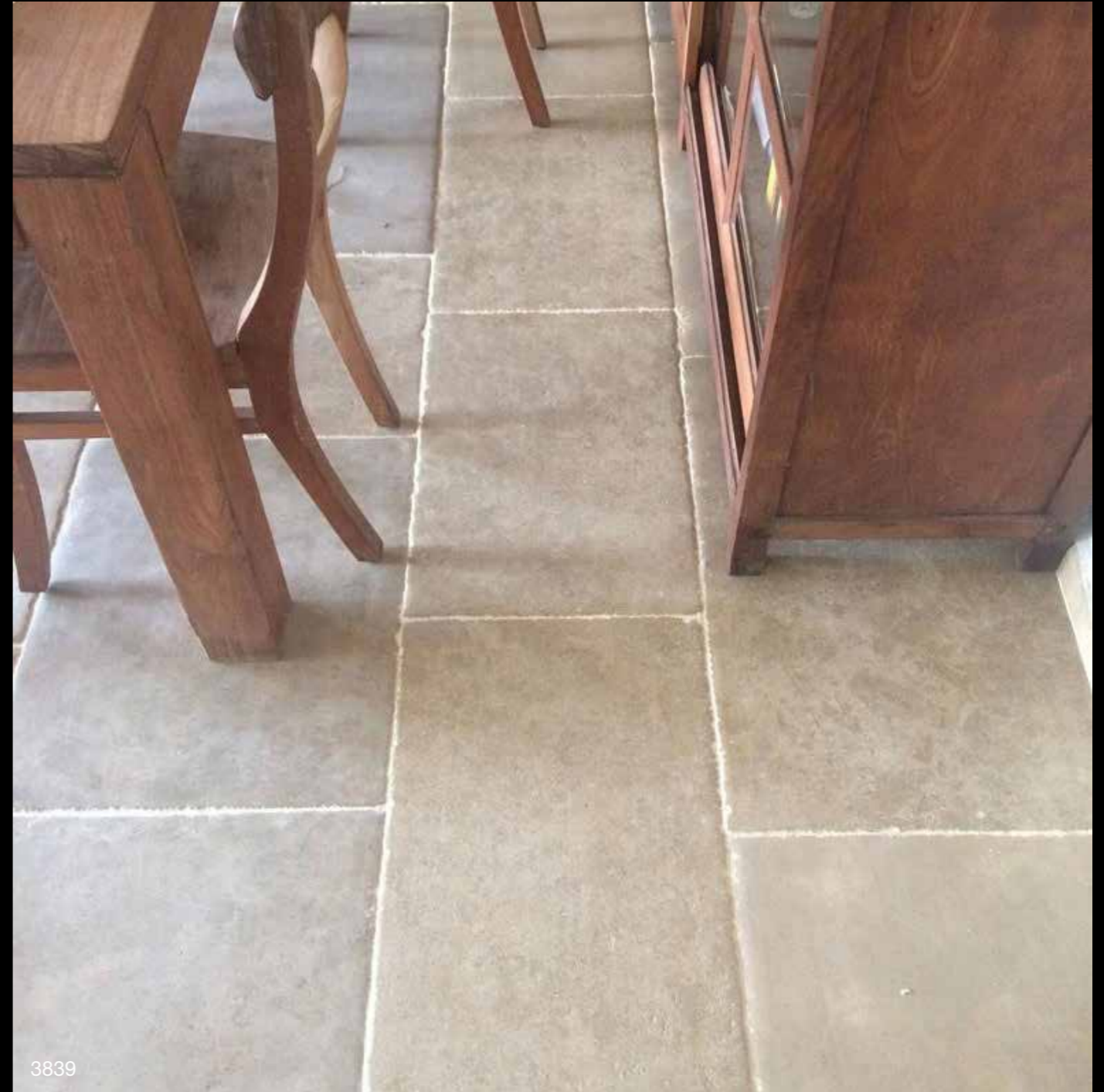
3839

T.A.B. + T.A.Br.

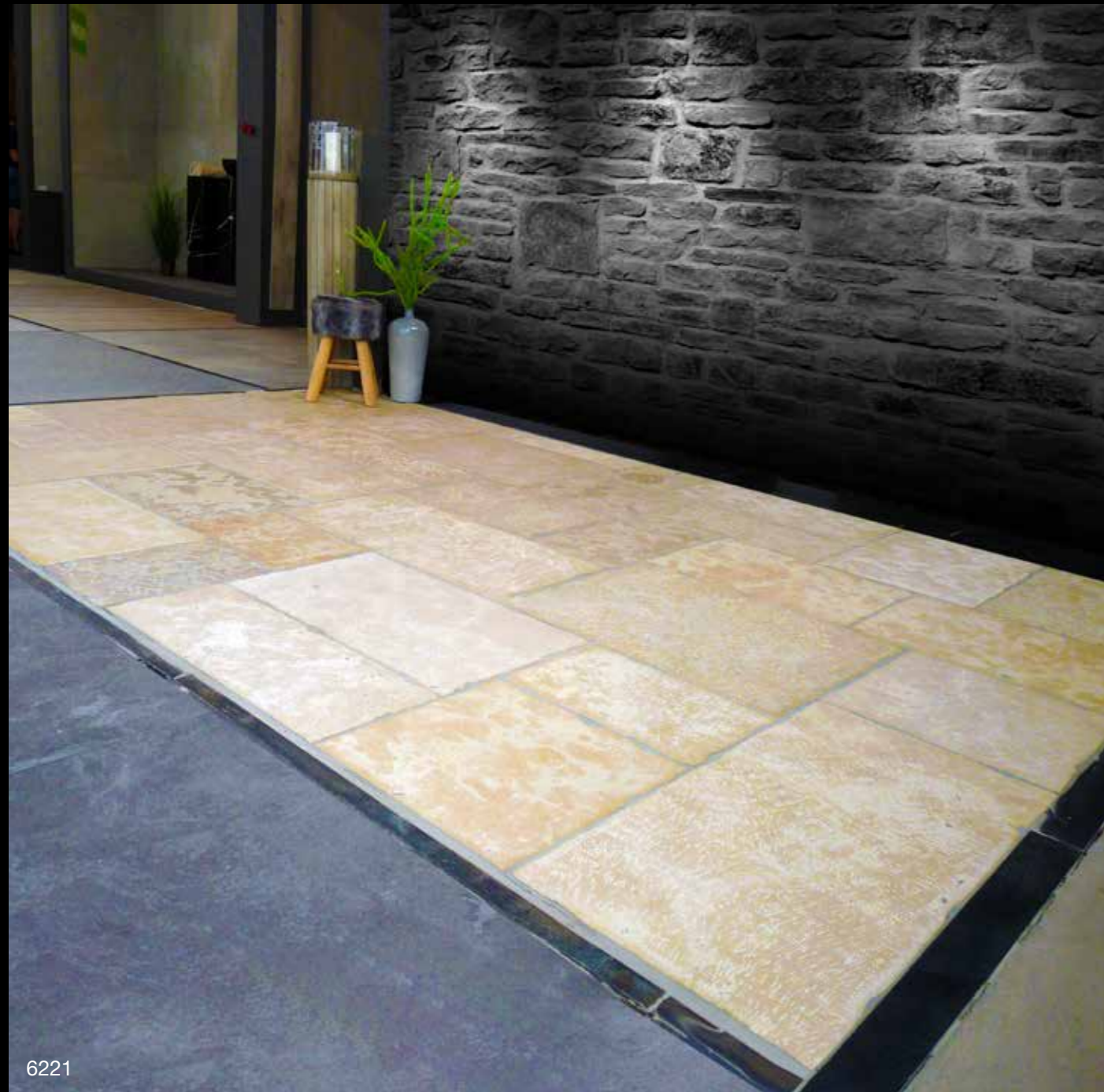
# St. Emillion



T.A.B. + T.A.Br.



# Vieux Patrimoine - Château St-Julien



6221

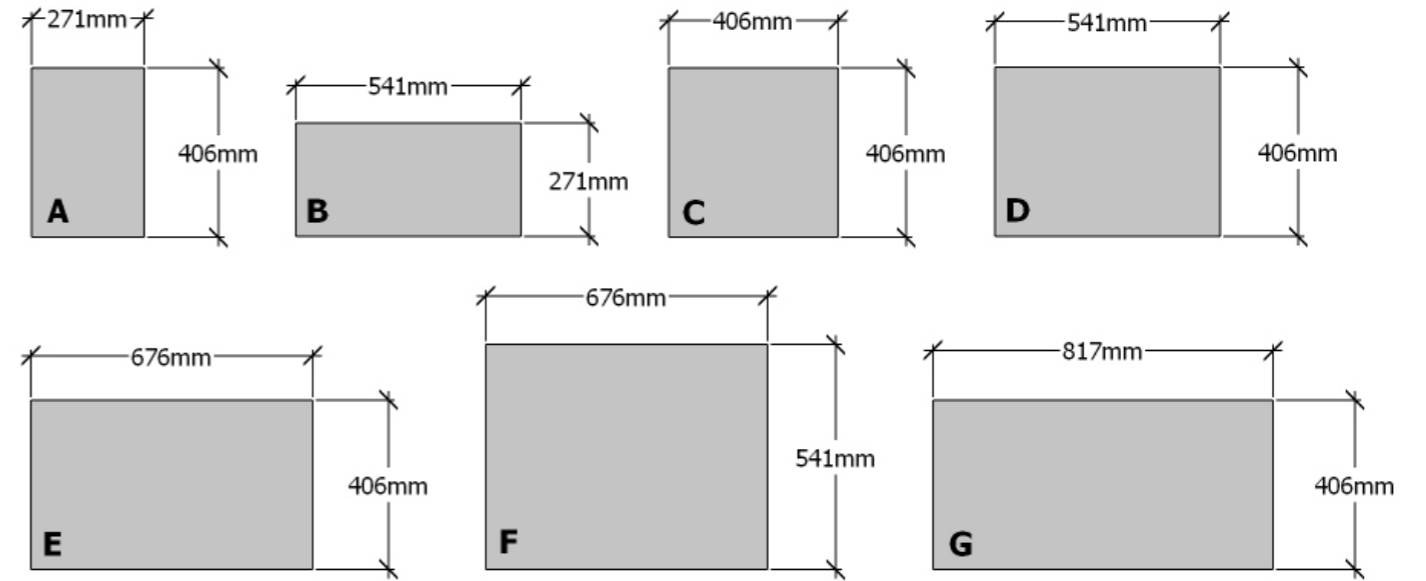
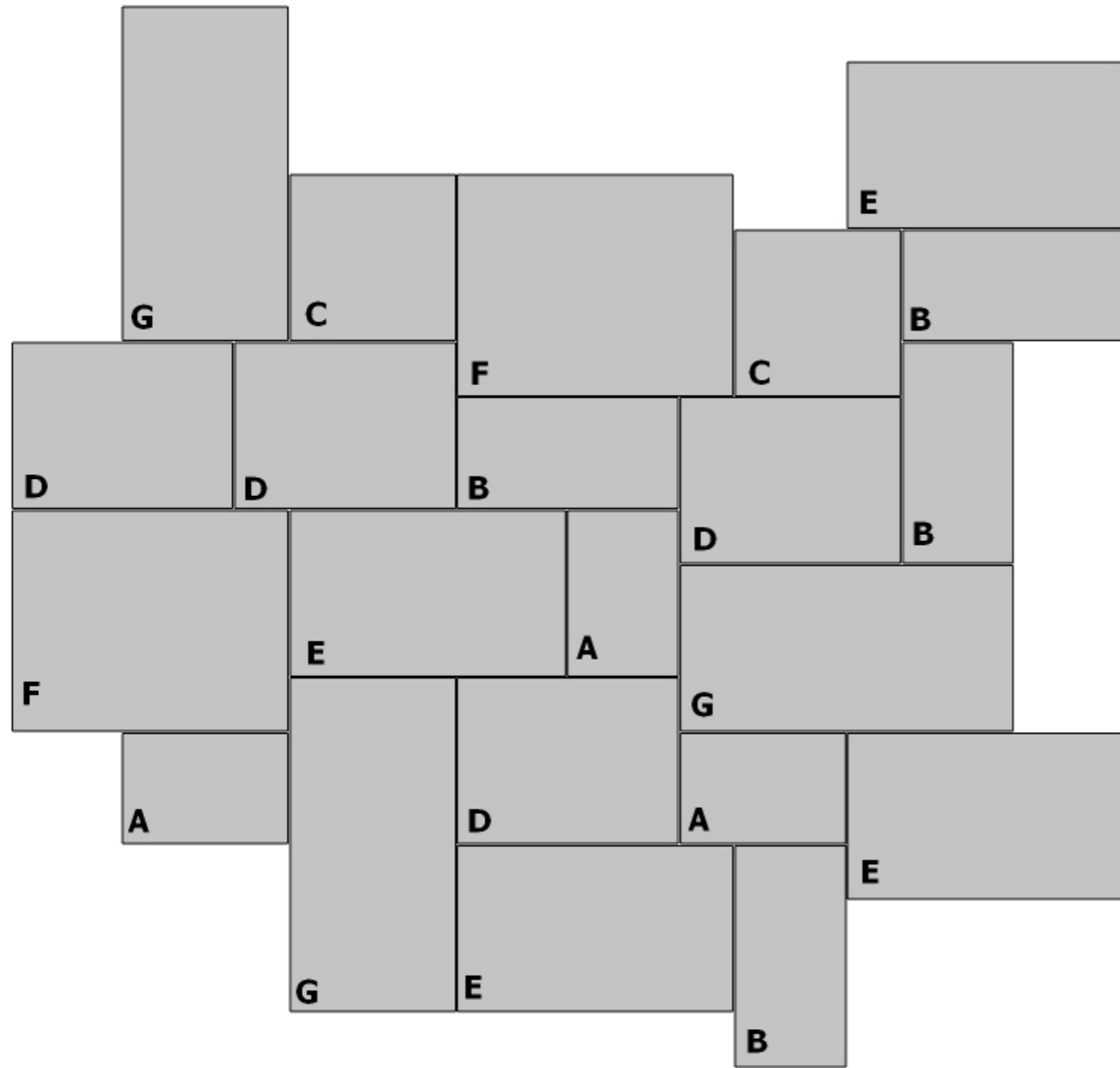
T.A.B. + T.A.Br. + Z.O.B.

# Vieux Patrimoine - Château St-Julien



T.A.B. + T.A.Br. + Z.O.B.

# Opus pattern - Vieux Patrimoine



## Dalle Vieux Patrimoine

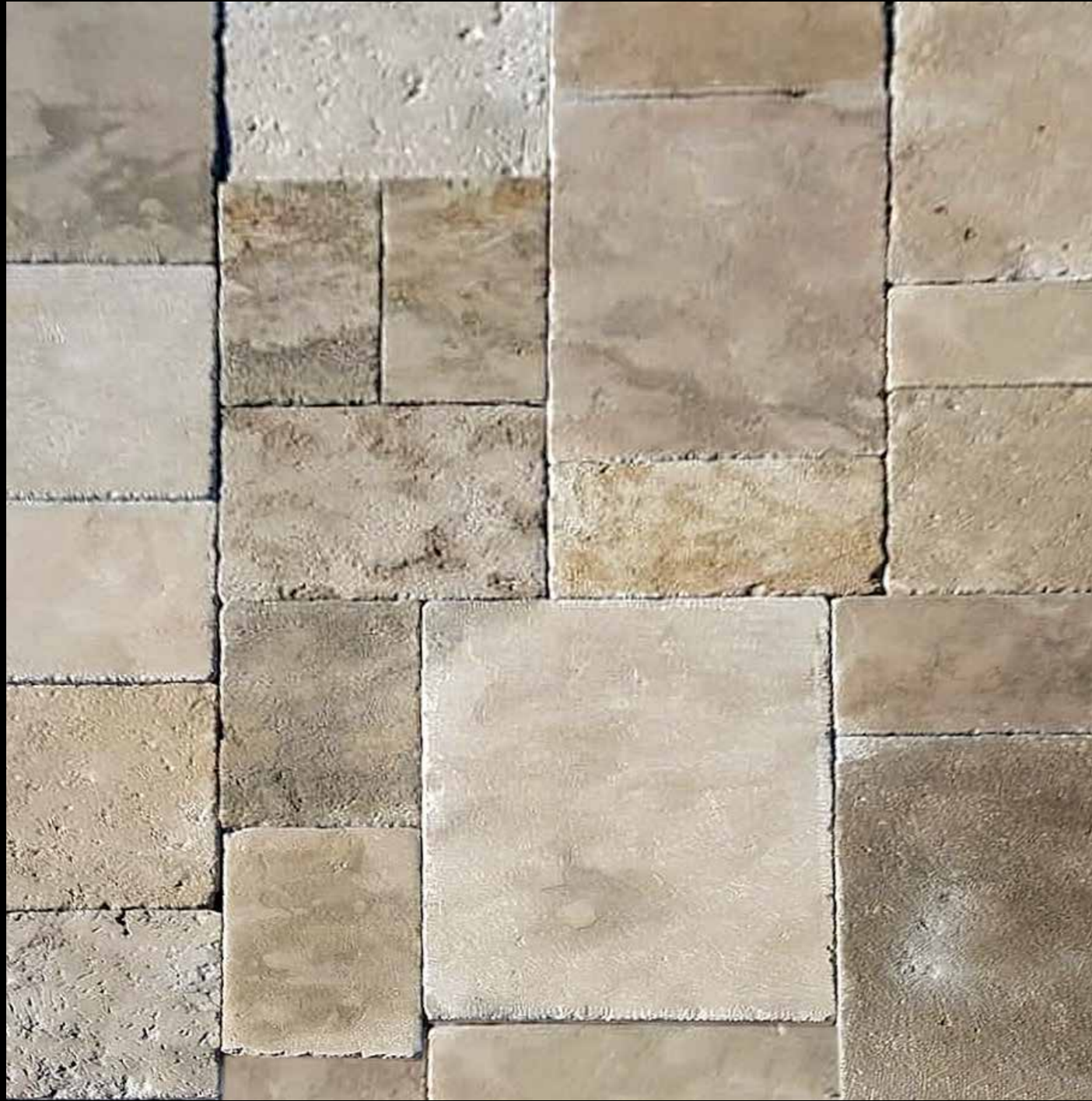
- A: 406x271 mm / 3 pcs
- B: 541x271 mm / 4 pcs
- C: 406x406 mm / 2 pcs
- D: 406x541 mm / 4 pcs
- E: 406x676 mm / 4 pcs
- F: 541x676 mm / 2 pcs
- G: 406x817 mm / 3 pcs

Total = 22 pcs

Opus 4,95 sgm



Vieux Patrimoine - Old Cottage



# Old heritage beige



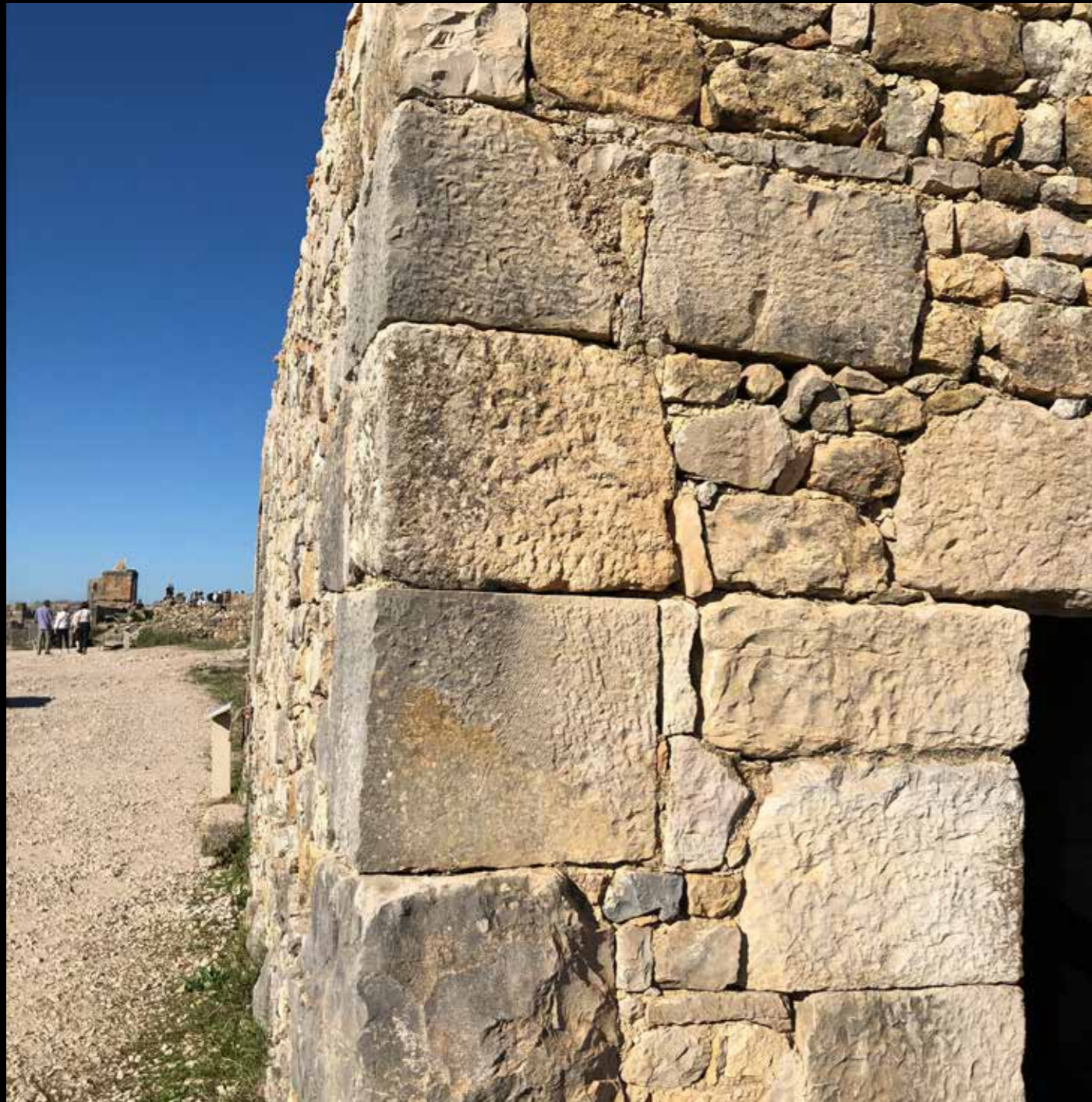
4889

T.A.B. + T.A.Br. + Z.O.B.

# Old heritage beige



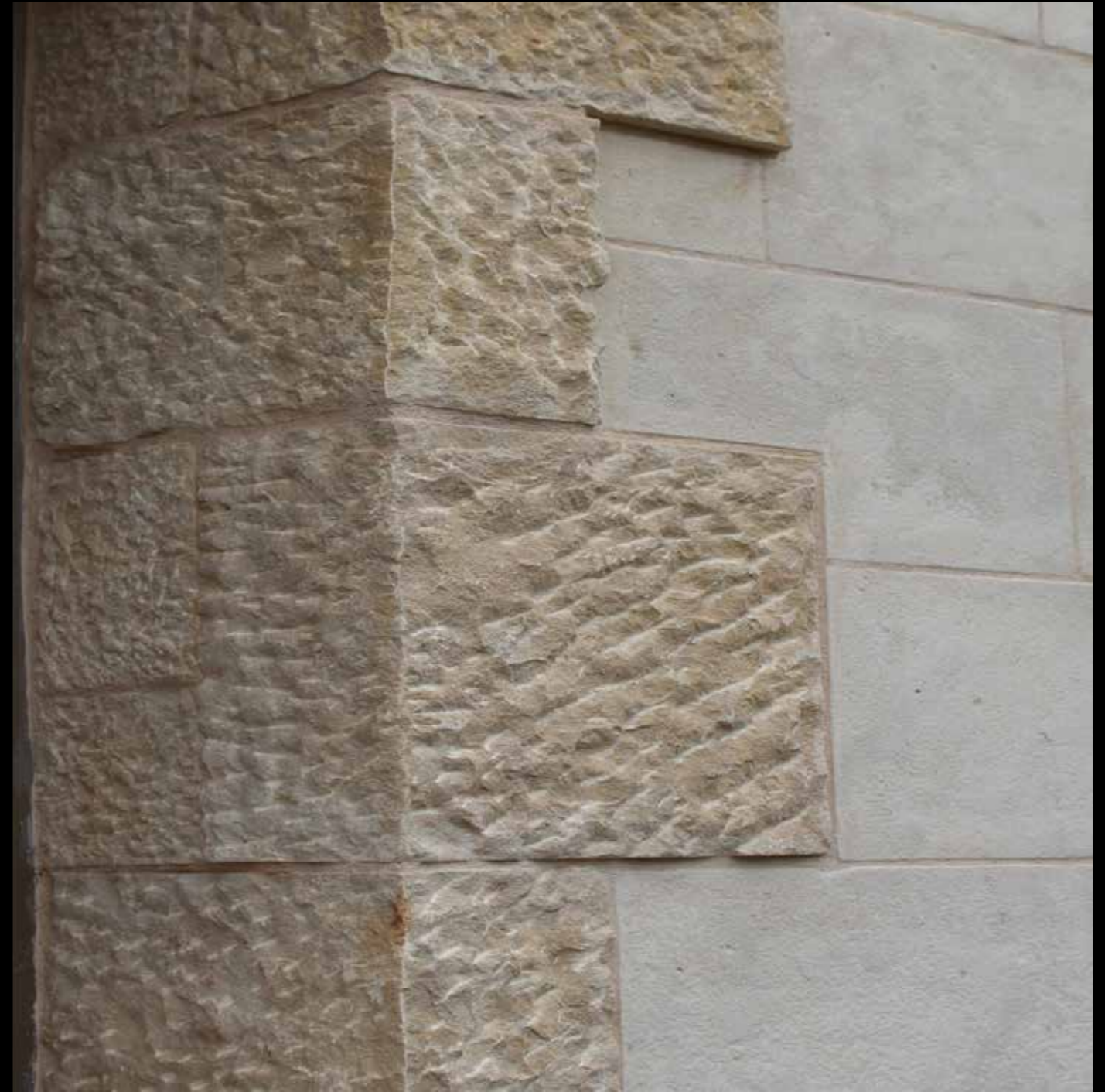
Posedano - Roman period - 168 AD



Posedano - Morocco - Current

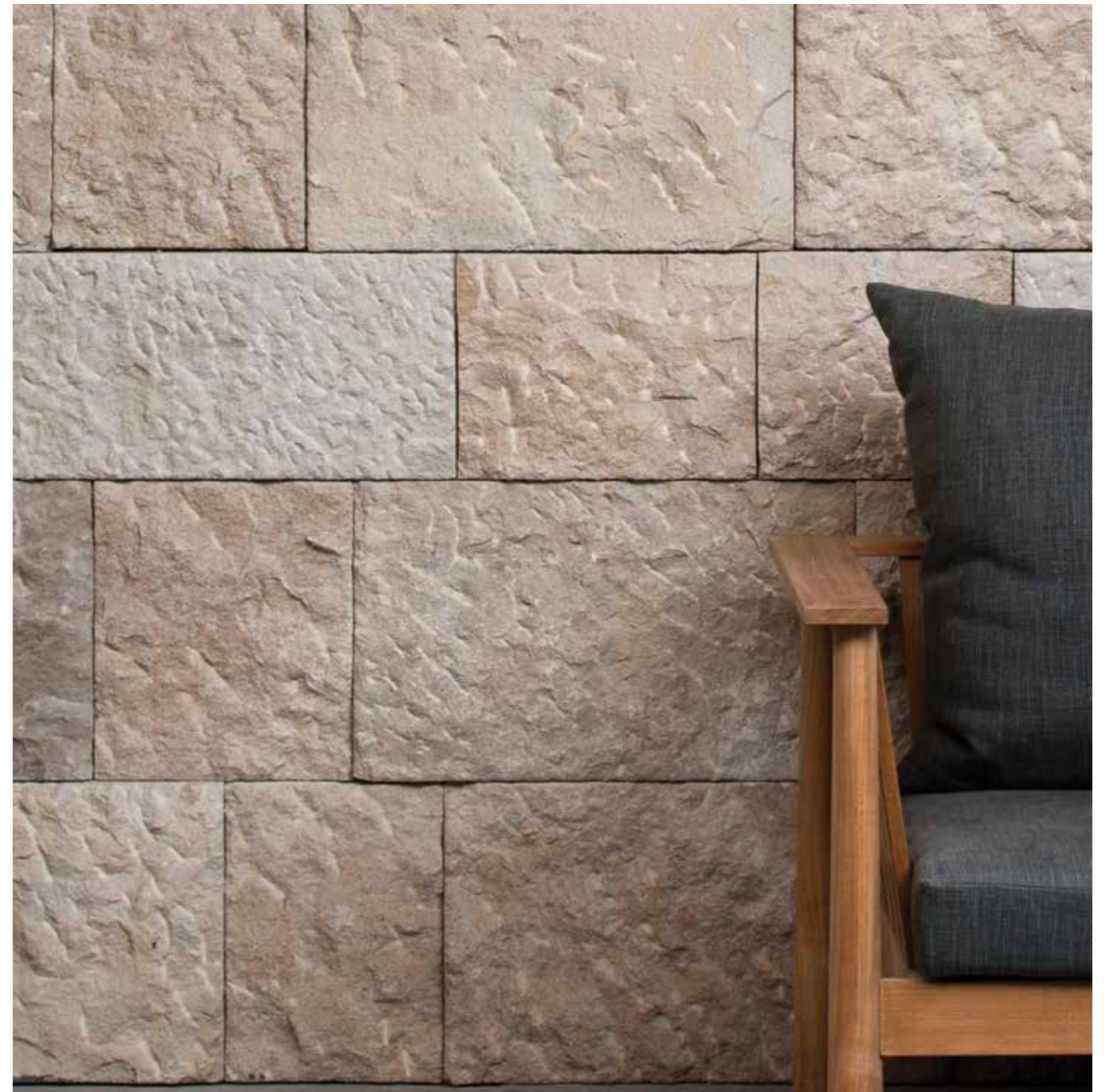


# Posedano



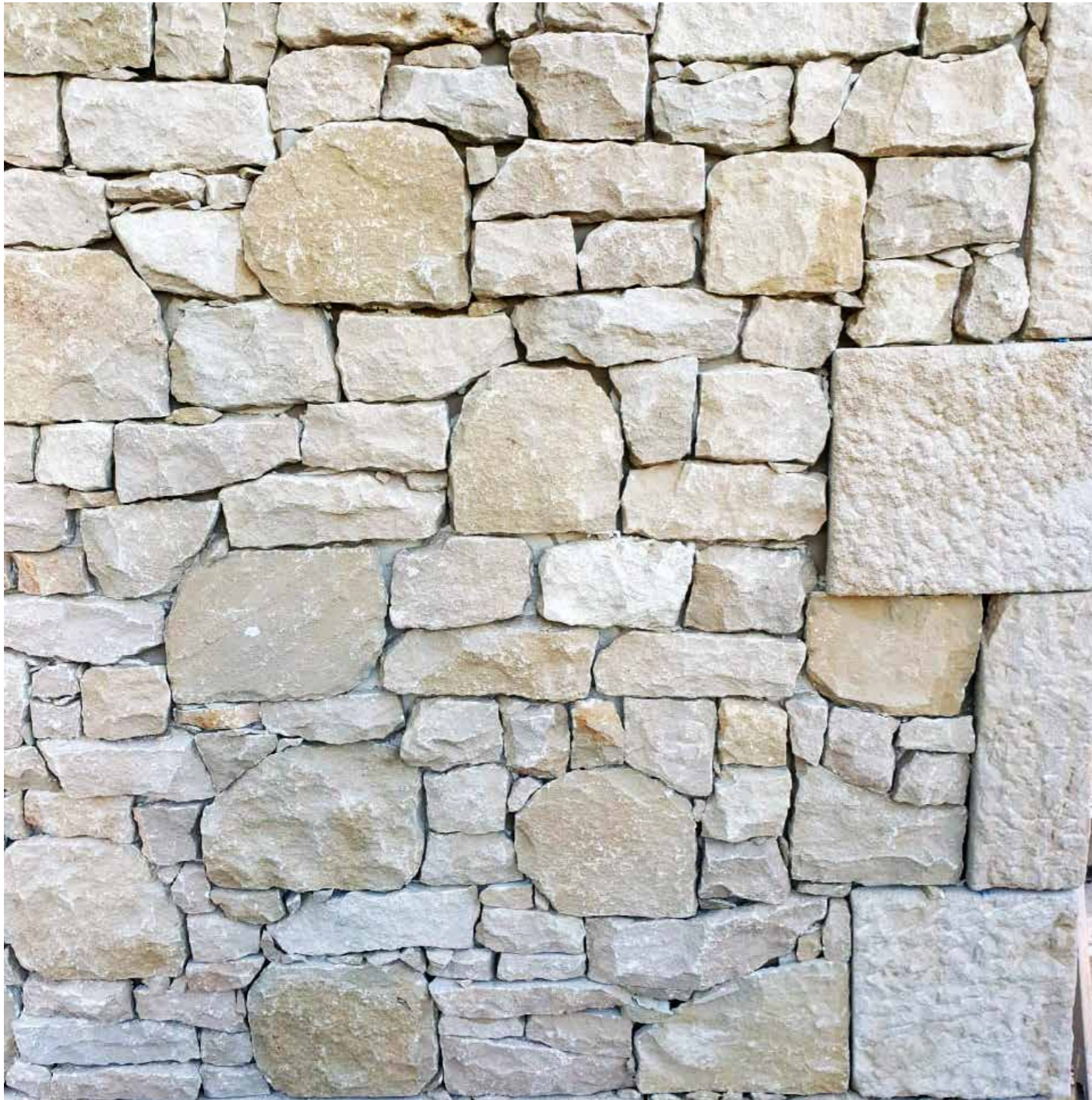


T.A.B. + T.A.Br. + Z.O.B.



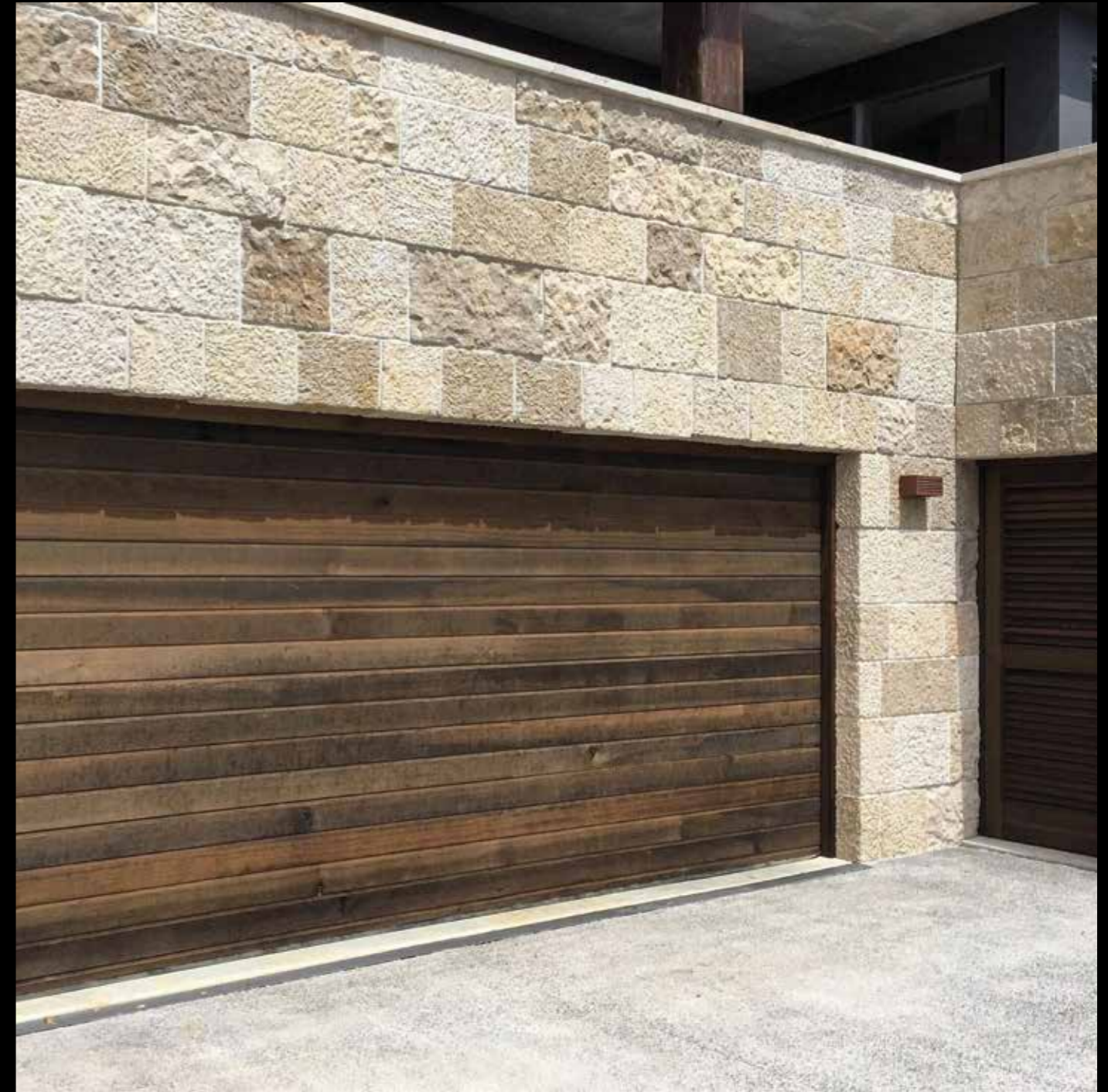
T.A.B. + T.A.Br. + Z.O.B.

# Posedano - Crazy randoms



T.A.B. + T.A.Br. + Z.O.B.

# Posedano



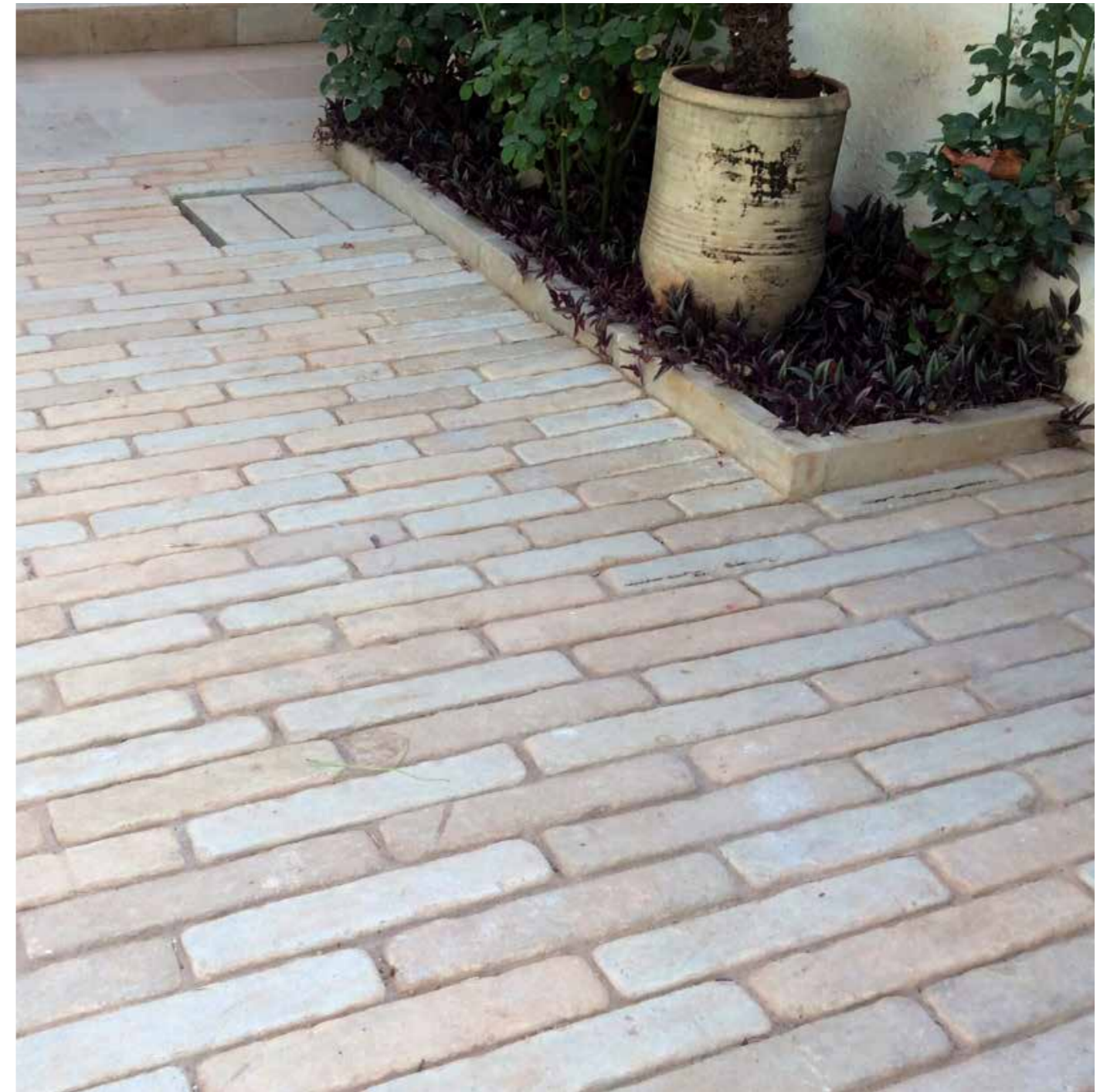
T.A.B. + T.A.Br. + Z.O.B.

## Yanis - pavers

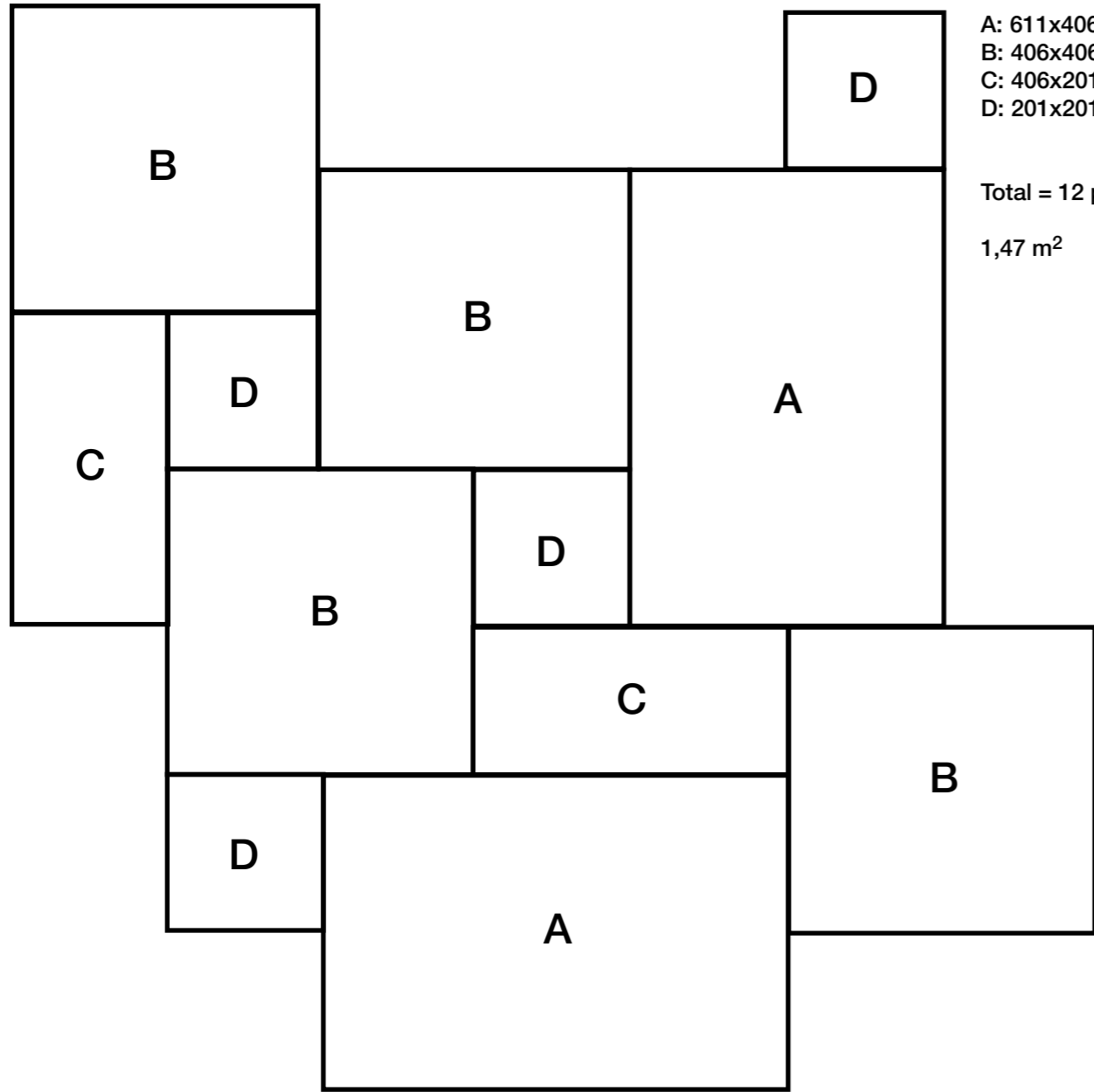


T.A.B. + T.A.G. - Vibrated - Bayadere

## Zefrou - Pavers



# Opus pattern 406



A: 611x406 mm / 2 pcs  
B: 406x406 mm / 4 pcs  
C: 406x201 mm / 2 pcs  
D: 201x201 mm / 4 pcs

Total = 12 pcs

1,47 m<sup>2</sup>

# Amazon Beige - Century H





Volubelis - Kahla

Meknes

Amazona Beige

Amazona Grey



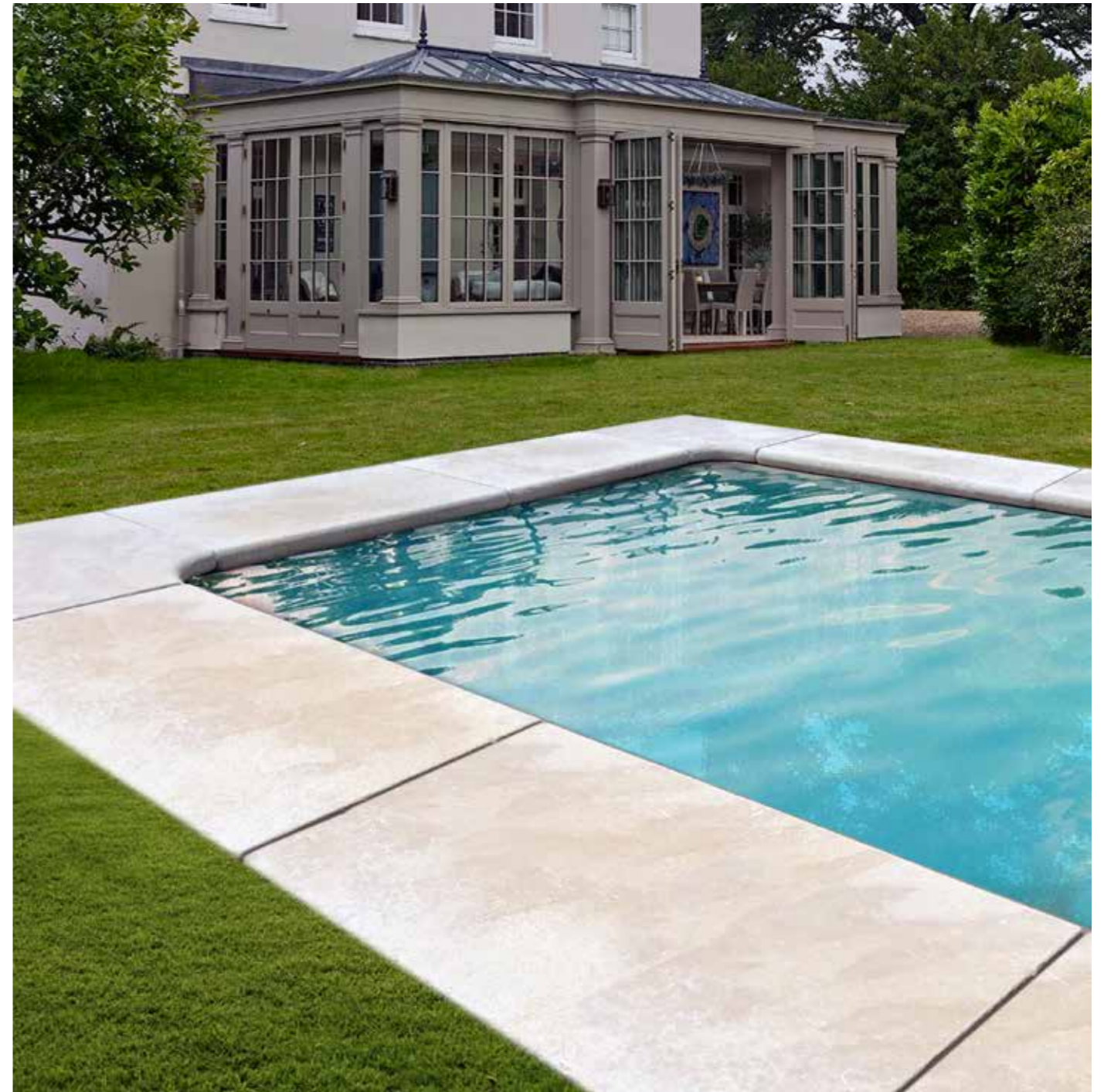
Amazone Beige - Antiquaire



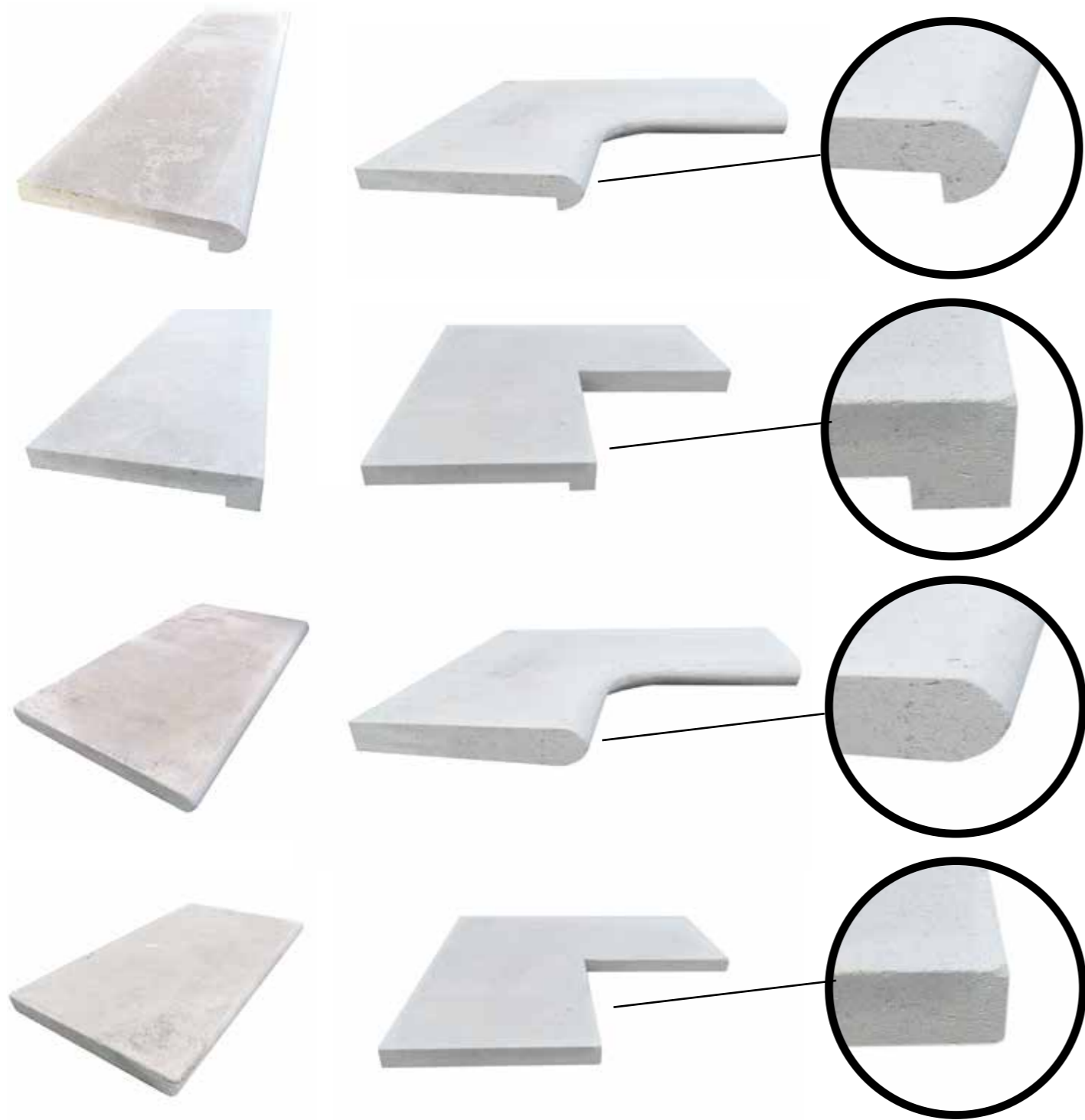
T.A.B. + Z.O.B.



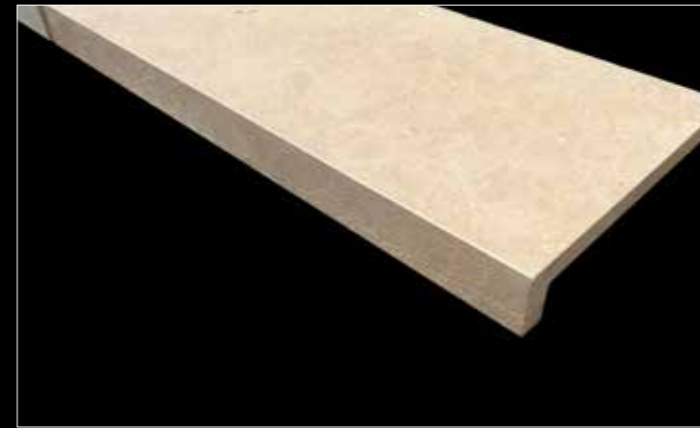
# Poolborders



# Morocco - Poolborders - Rebate



# Poolborders



# Stairs



T.A.B. - Sahara - Type 8



Type 7 - Astragal stucked

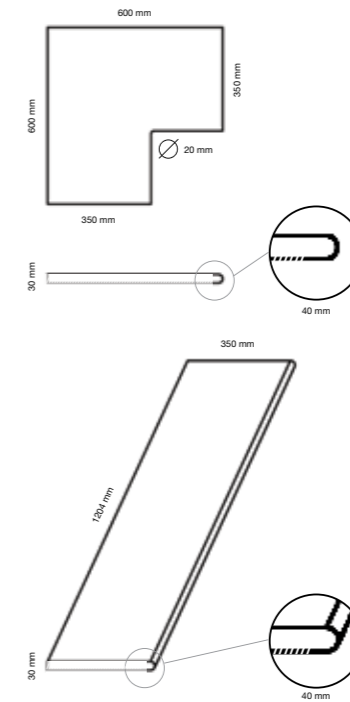
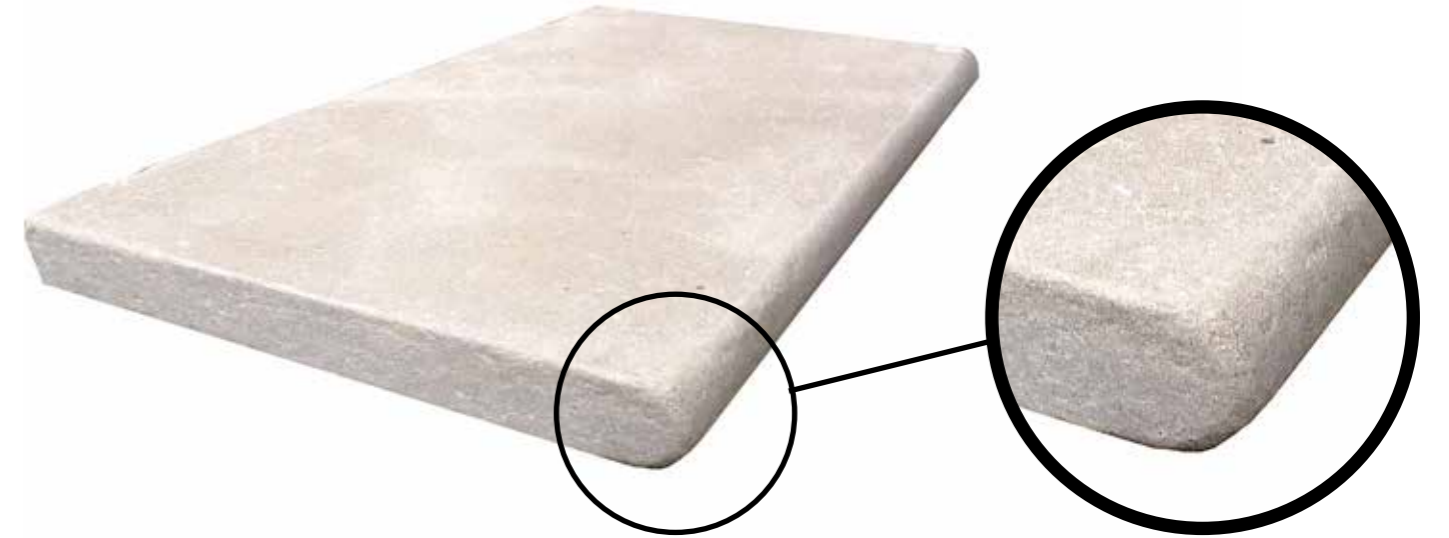
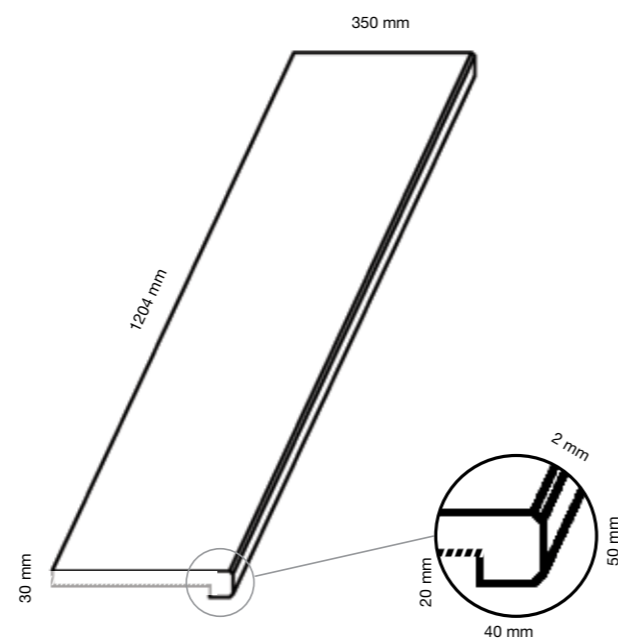
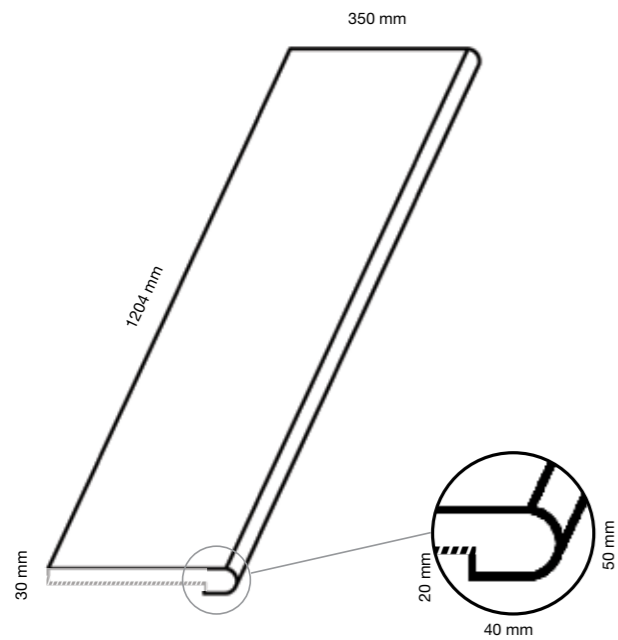
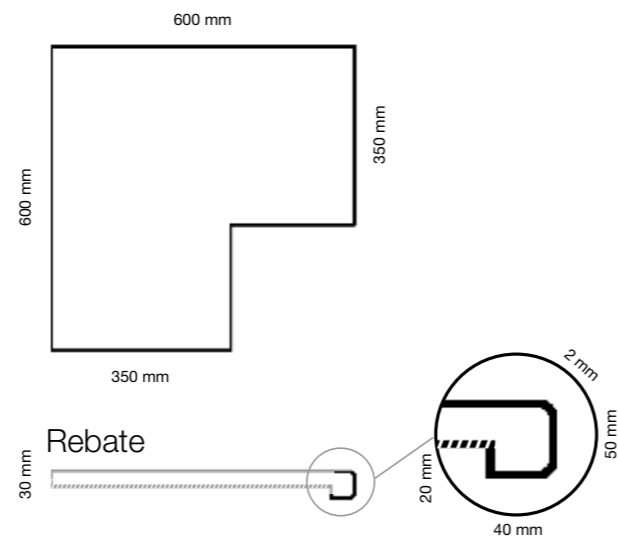
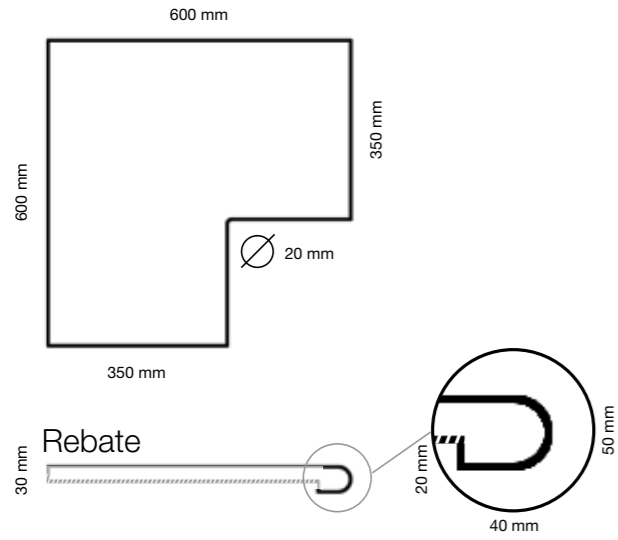


Type 8 - Nez de courbin



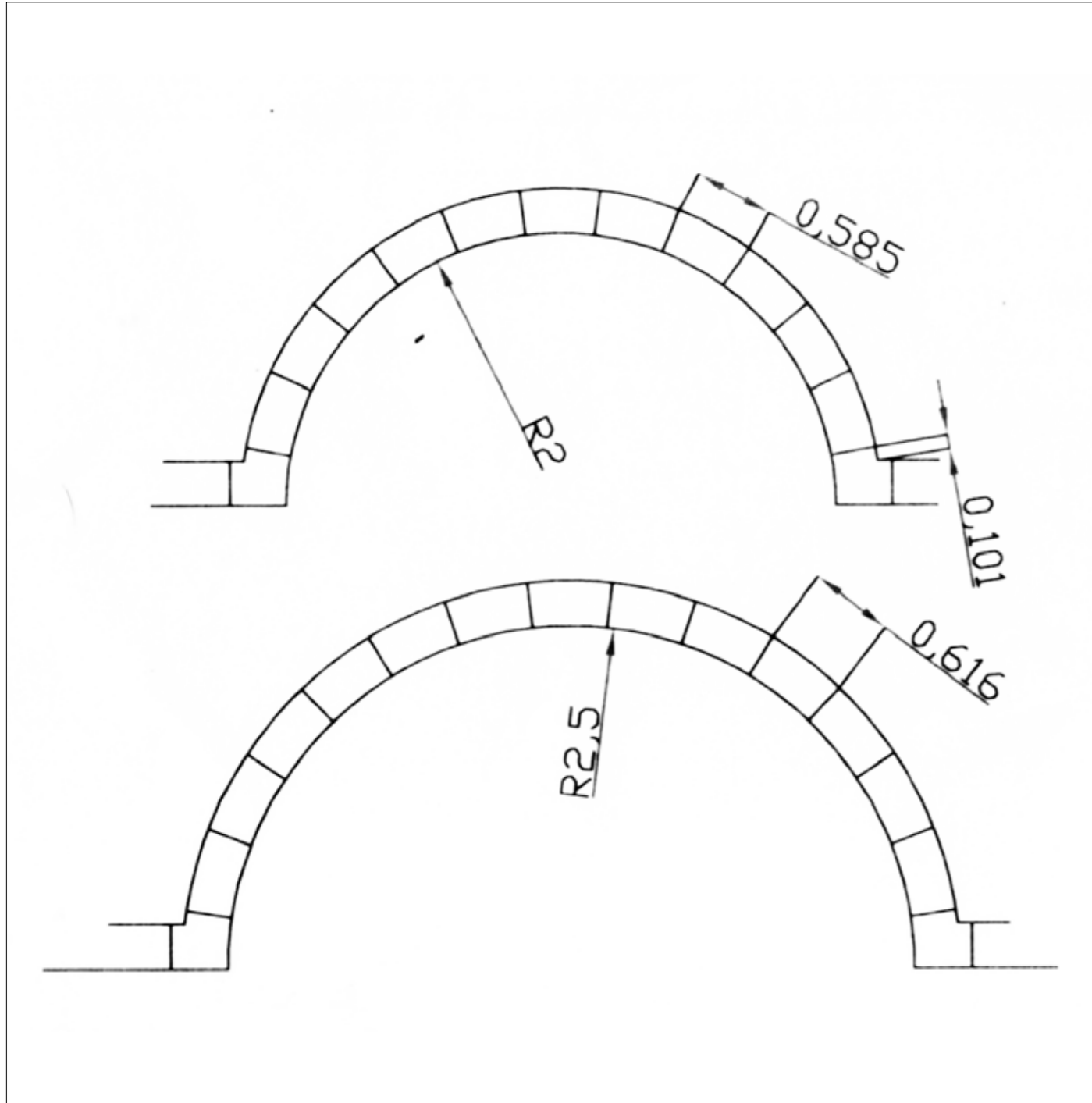
Type 9 - Astragal stucked

# Poolborders - Technical sheets

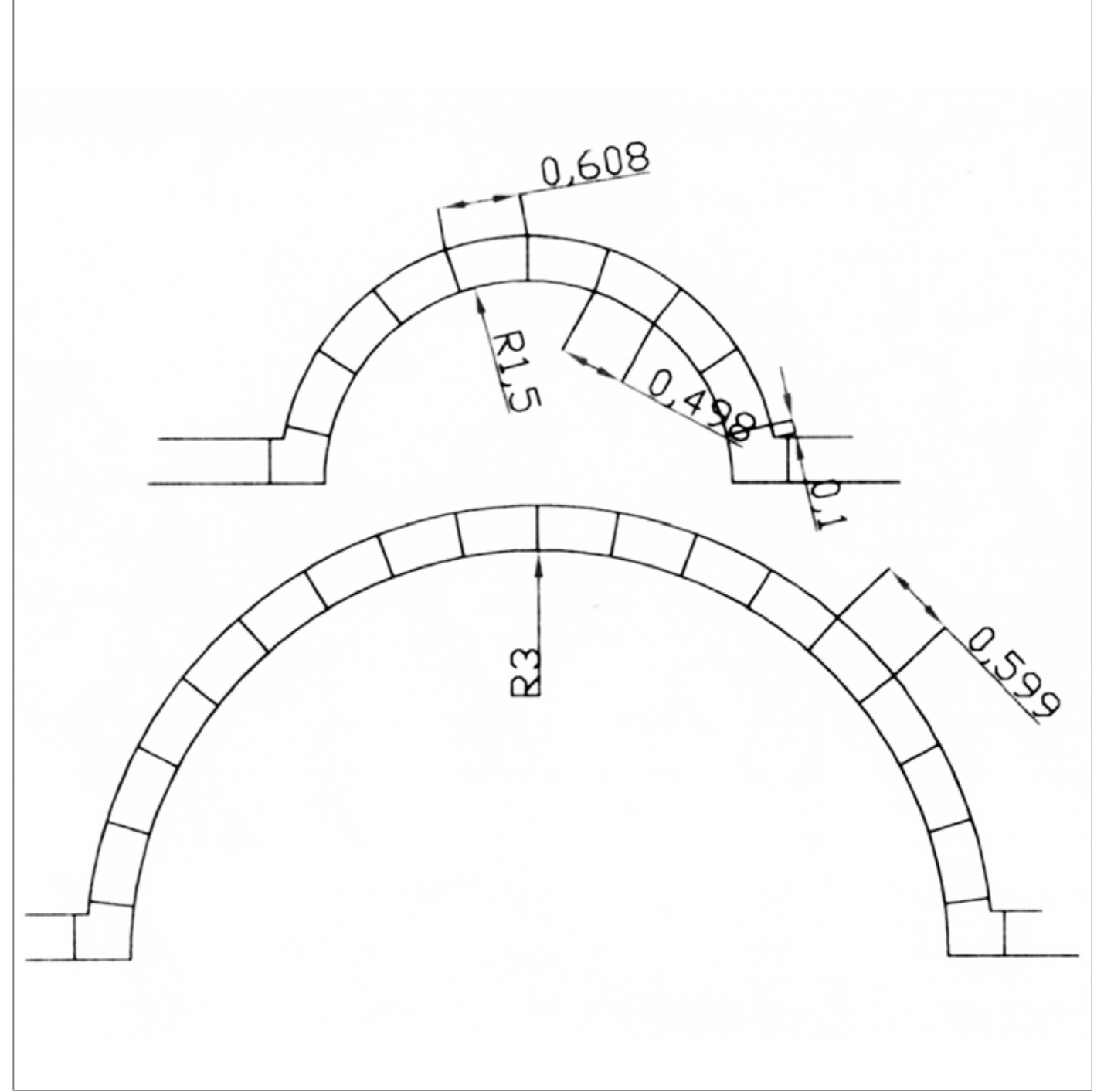


Type 3

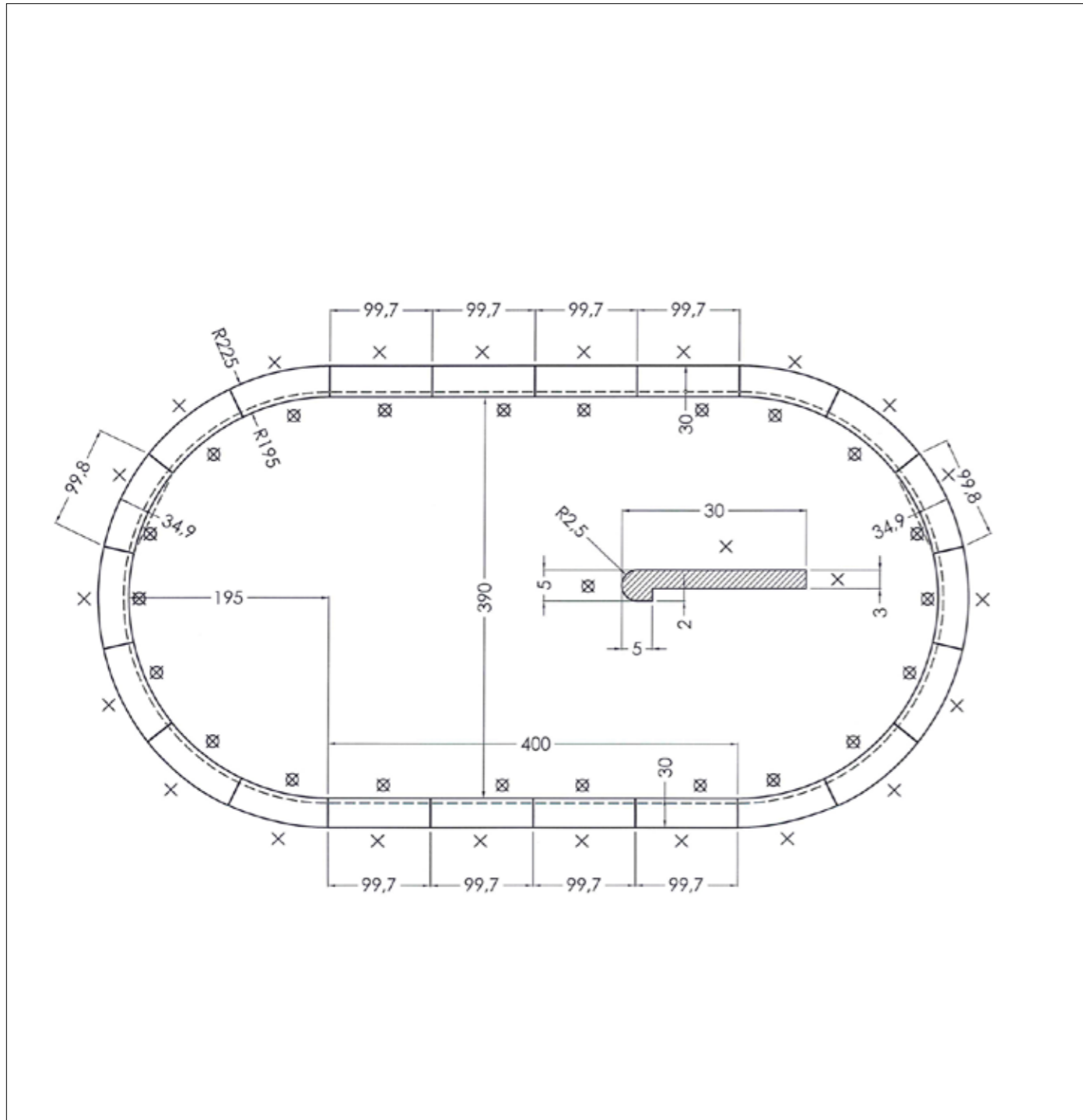
# Drawing pool borders



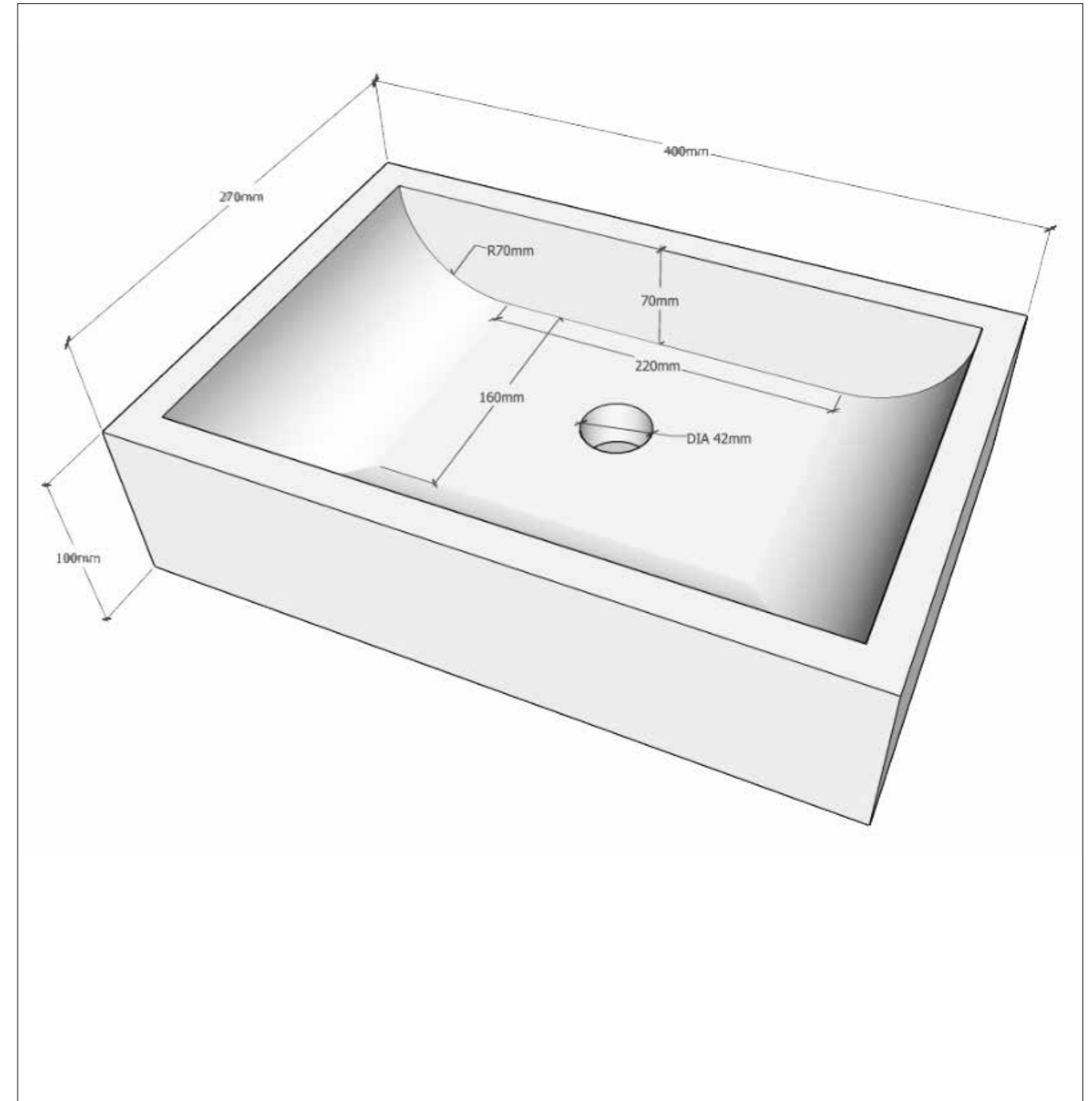
# Drawing pool borders



# Technical sheet - Roman bath



# Technical sheet - Sinks







# Block stairs (bs)



Blockstairs - Posedano

Blockstairs - Erosion

# Borders (bo) - wall caps (wc)



BO - Type 1



BO - Type 2



BO - Type 3



WC - Type 1

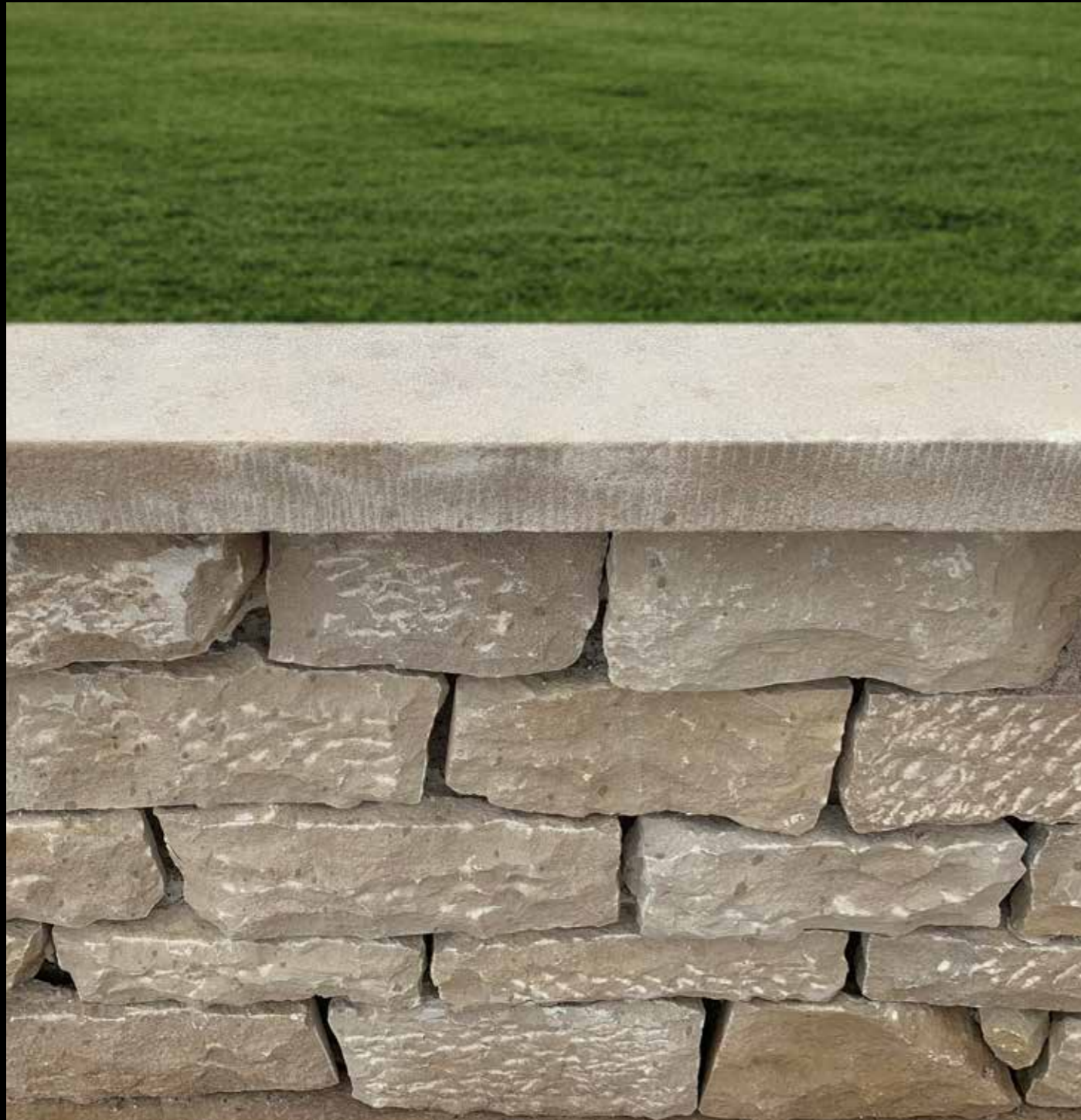


WC - Type 2

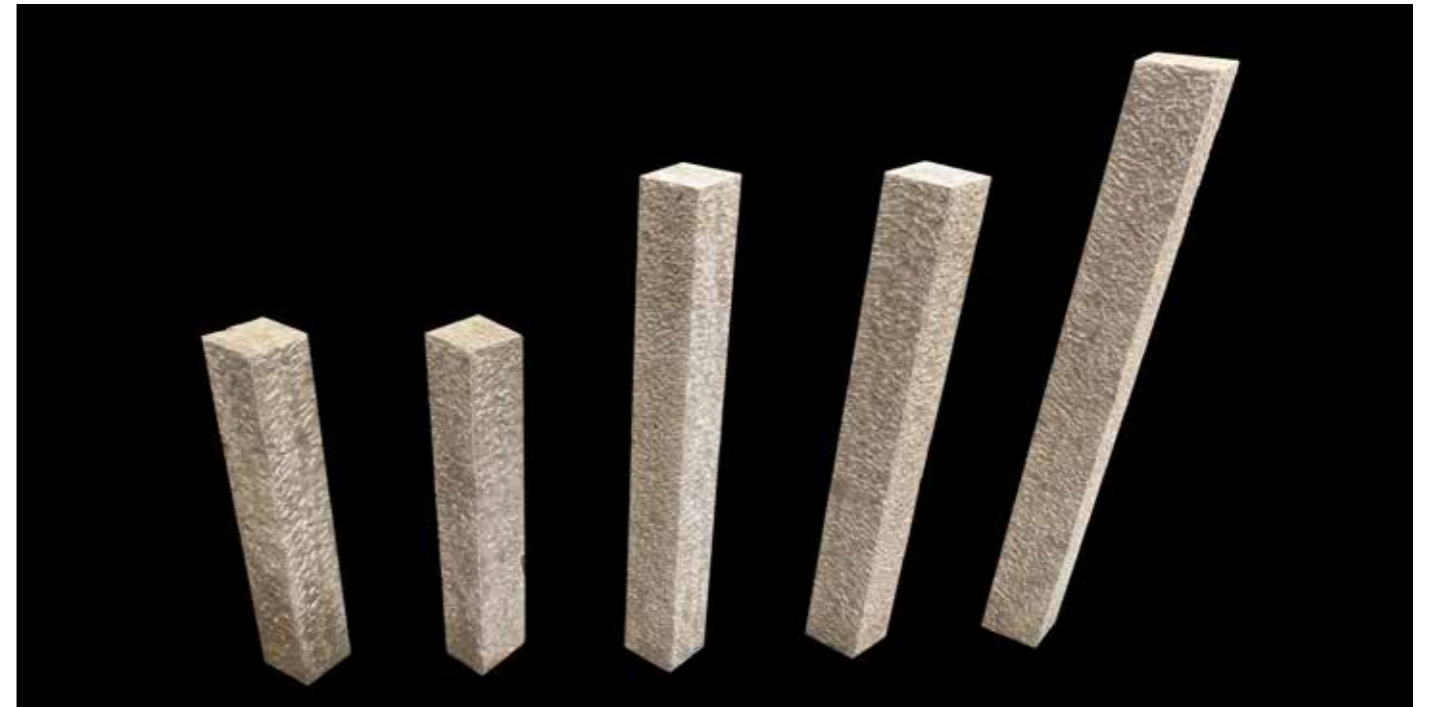


BS - Type 1

# Wall caps



# Palissades

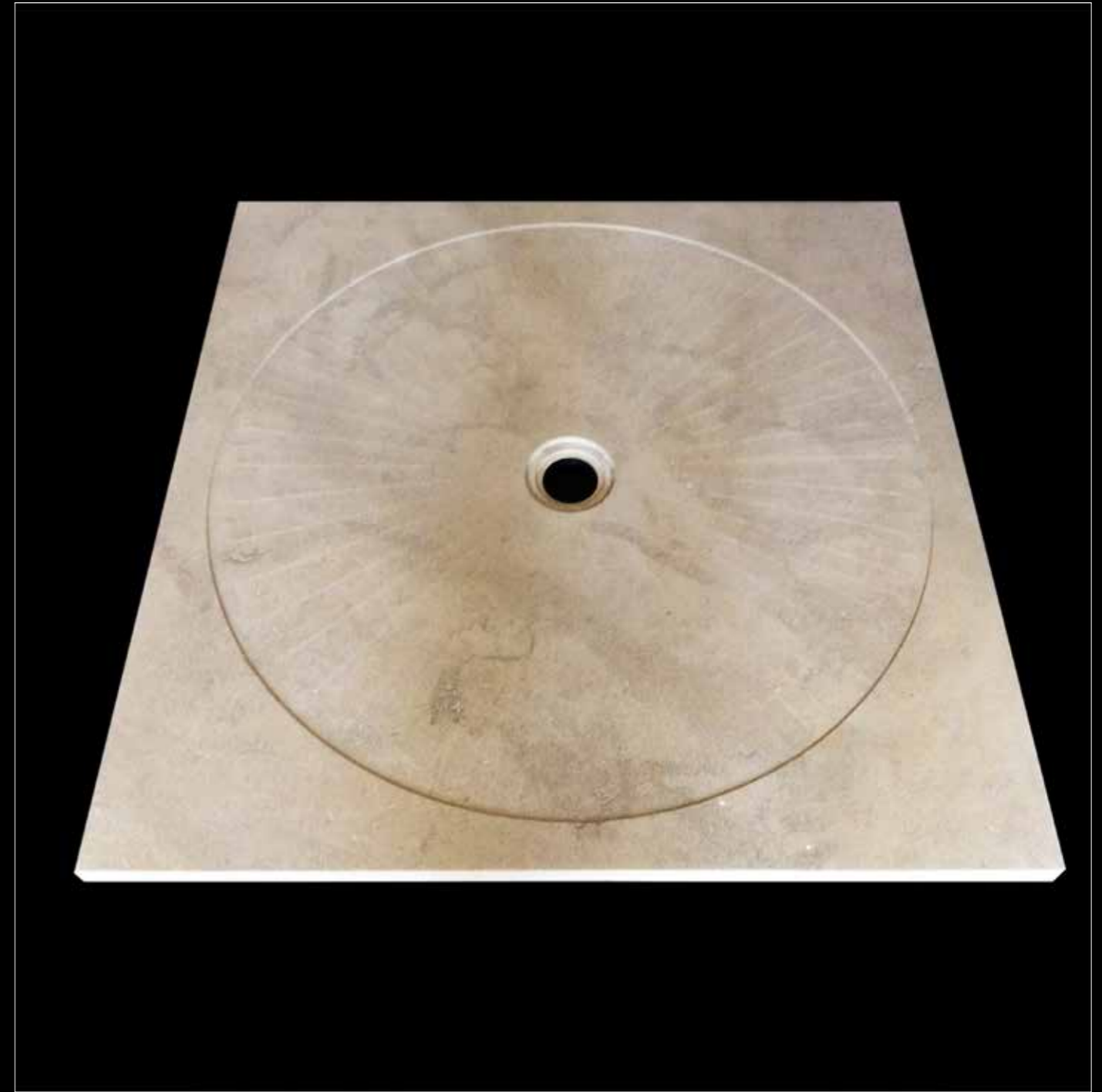


# Sinks



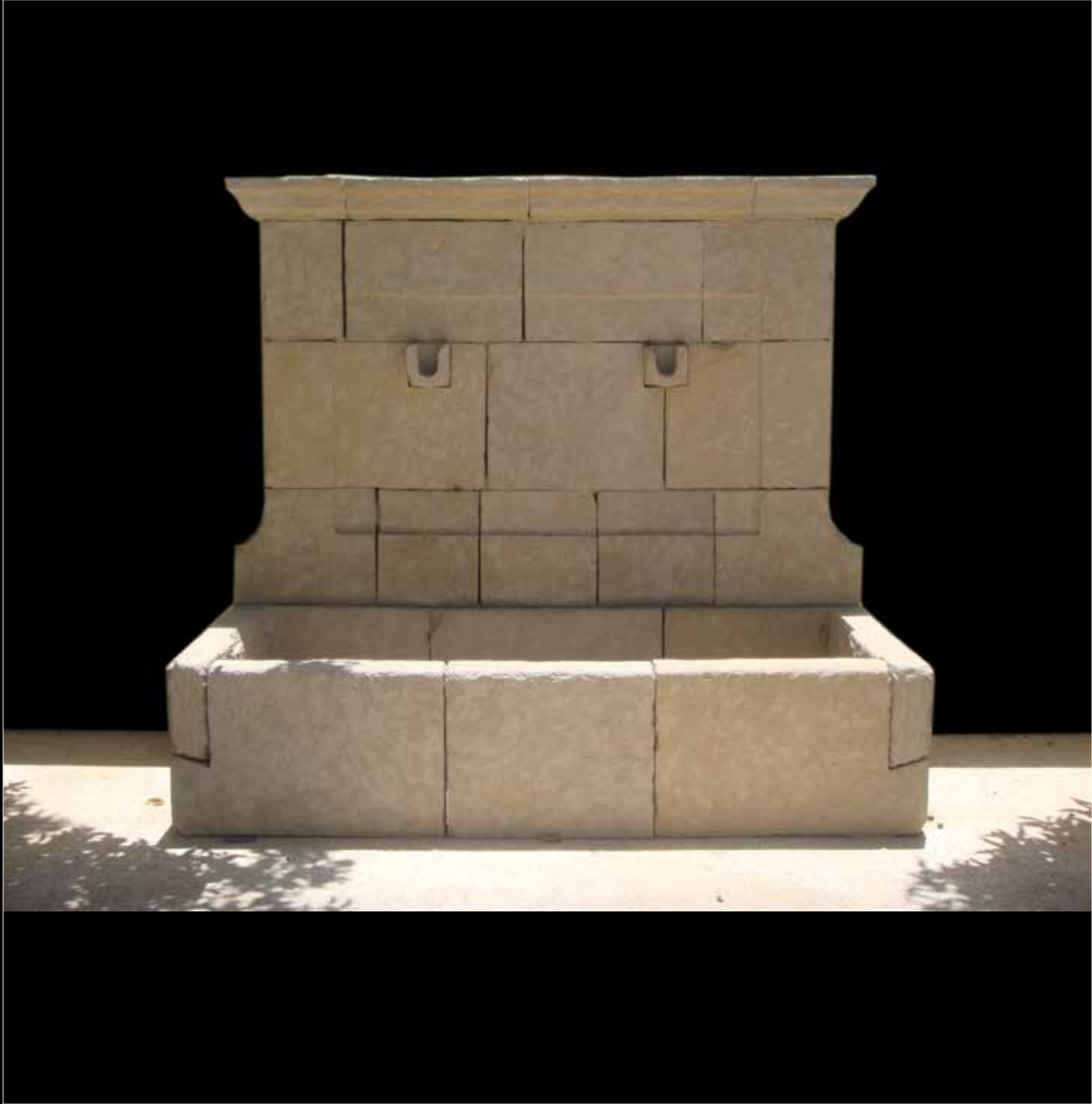
T.A.B.

# Shower plates



T.A.B.

# Fountains



# Blocks



# Slabs



# Factory - Zefrou - Morocco



# Packing





Headquarters in Oostkamp (Bruges), Belgium, founded in 2000 by Julien Vanhollebeke.

Over thirty years of experience in the world of stone and ceramics was used to establish joint ventures with various companies abroad. New products with special niches are created by combining knowhow and specialised machinery.

Today, Stone Consulting is active in Morocco, and also Asia, including China, India, Vietnam, Indonesia, and Tunisia. On our website you will find information about the products we currently stock in our warehouses. Customers can check our available stock online via the website and place their order in real time.

We have developed a unique track and trace system for customers who purchase containers directly from our various partners. This programme allows customers to track the containers from order to delivery by means of an online logbook. At our companies abroad, a team is permanently at your disposal to ship the materials in the fastest and most suitable conditions and deliver them to their final destination all over the world.

In 2000, a new milestone was inevitable. In 2010, all the special materials were brought under the branch name 'STONE SENSES'.

In 2019 we became member of Trustone to put our due diligence in a code of conduct. In 2020 Fabrice Rogiers became member of the board to lead Stone Consulting through the future.



Julien  
Vanhollebeke  
Founder



Fabrice  
Rogiers  
CEO

Stone Consulting nv  
Gaston Roelandtsstraat 16  
8020 Oostkamp Belgium  
tel. +32(0)50 301410  
info@stoneconsulting.eu  
www.stoneconsulting.eu





Representative:

Chris Van Kerschaver

M+32 (0)492 26 74 04

chris@stoneconsulting.eu

Stone Consulting NV

Gaston Roelandtsstraat 16 b1

8020 Oostkamp - Belgium.

T+32 (0)50 30 14 10

info@stoneconsulting.eu

[www.stoneconsulting.eu](http://www.stoneconsulting.eu)

[www.stonesenses.eu](http://www.stonesenses.eu)

Proud member of:



TruStone



Setting the Standards for Natural Stone

